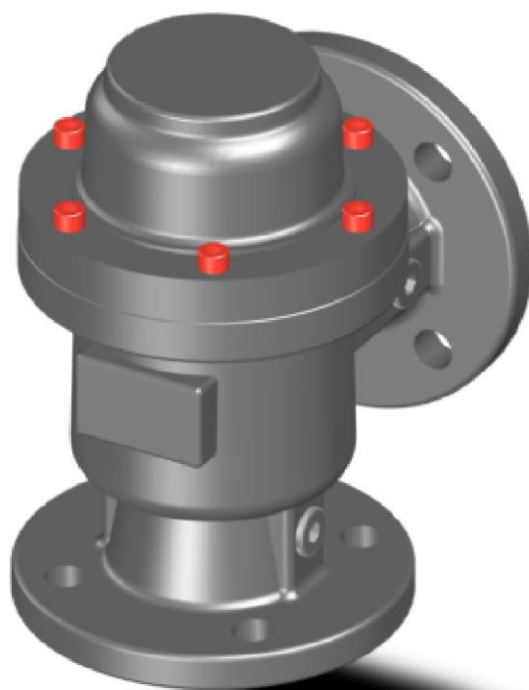
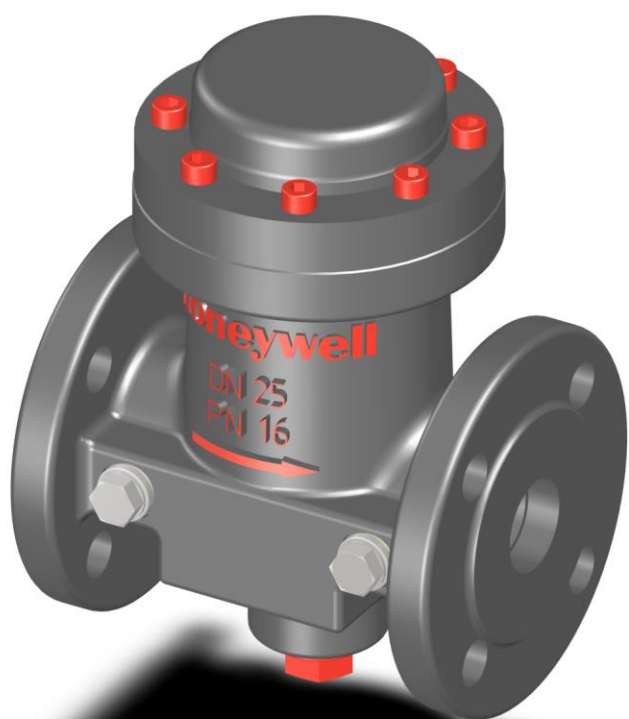


Honeywell



HON 906 / HON 907 Cellular gas filter

Component documentation,
Maintenance manual and spare parts

Contents


1	General considerations	3
1.1	About this component documentation	3
1.2	About the safety notices	5
2	Description	6
2.1	Intended use	6
2.2	Device models	7
2.3	Labels/Markings	8
2.4	Identifying the device	9
2.5	Layout and operation	10
2.6	Technical specifications	12
2.7	Pressure loss of the filter insert when new	16
3	Safety	19
3.1	Basic safety rules	19
3.2	Requirements concerning the workforce, personal protective gear, workplaces	20
4	Maintenance	21
4.1	Maintenance schedule	21
4.2	Preparing for the maintenance	21
4.3	Performing maintenance on cellular gas filters HON 906 / HON 907	22
4.4	Completing the maintenance	25
5	Storage and disposal	26
5.1	Storing the device	26
5.2	Disposing of the device	27
6	Appendix	28
6.1	Additional information regarding spare parts	28
6.2	HON 906: Spare parts list	30
6.3	HON 906a / 906a"t": Spare parts list	35
6.4	HON 907: Spare parts list	39
6.5	Differential pressure measuring system: Spare parts list	42
6.6	Maintenance and service parts for cellular gas filter - HON 906	43
6.7	Maintenance and service parts for the cellular gas filters - HON 906a/906a"t"	44
6.8	Maintenance and service parts for cellular gas filter - HON 907	46
6.9	Maintenance and service parts - differential pressure measuring system	47
6.10	Lubricants and threadlockers	48

1 General considerations

Contents

Topic	Page
About this component documentation	3
About the safety notices	5

1.1 About this component documentation

Validity and purpose	<p>This component documentation applies for the cellular gas filters HON 906 / HON 907.</p> <p>This component documentation provides all individuals with the information required in order to safely handle the device in connection with the following tasks:</p> <ul style="list-style-type: none"> ▪ Maintenance and servicing ▪ Storage and disposal
Target group	<p>This component documentation is intended for anyone who requires the following information concerning the product:</p> <ul style="list-style-type: none"> ▪ Intended use ▪ Device models ▪ Technical specifications ▪ How it works ▪ Maintenance manual ▪ Spare parts drawings and spare parts lists
Illustration	<p>Honeywell offers products with identical functions in a number of different sizes. For this reason, we are unable to guarantee that the illustrations in this documentation will match the dimensions of your product. In these cases, the illustrations should be viewed as a concept sketch.</p>
 Safety	<p>Failing to observe the information provided in this document may lead to injuries, including death and material damages.</p> <p>To ensure the safety, any persons handling the product must have read and understood the following parts of this document before they start with any work involving it:</p> <ul style="list-style-type: none"> ▪ the chapter entitled Safety ▪ the chapters that describe the work to be done
Copyright notice	<p>Unless explicitly permitted, the disclosure as well as duplication of this document, the exploitation and communication of its contents are prohibited. Any breach or infringement will result in liability for damages. All rights reserved in the event of patent, utility model or registered design registration.</p>

Copyright

© Copyright 2021 by
 Honeywell Process Solutions
 Honeywell Gas Technologies GmbH
 Osterholzstraße 45
 34123 Kassel
 GERMANY

Tel: +49 561 5007-0
 Phone number for service: +49 561 5007-180
 Fax: +49 561 5007-107
 Fax number for service: +49 561 5007-108
 E-mail: gas-ks@honeywell.com
 Website:
www.honeywellprocess.com
www.hongastec.de
 Printed in Germany

Details about the manufacturer's liability

The manufacturer will not be liable for damages and malfunctions arising from failure to observe this component documentation and other applicable documents.

Constructive changes

The written approval from Honeywell Gas Technologies GmbH, Kassel, is required for any modifications and additions to the product. Any violation will void the legal liability for consequences arising thereof.

1.2 About the safety notices





Meaning

The information contained in the safety notices is intended to prevent personal injury. Safety notices contain the following information:

- Nature and source of the danger
- Possible consequences associated with the non-observance of the notice
- Procedures for the prevention of personal injury

Types of safety notices

This document contains the following types of safety notices:

Type of safety notice	Description	Sign
Basic safety notices	Superordinate safety notices not relating to a specific task: <ul style="list-style-type: none"> ▪ They contain a summarized description of hazards, risks and safety procedures associated with the handling of the device. ▪ Their purpose is to inform and educate the user about an existing danger and about practicing behavioral safety. ▪ They are suitable as safety instruction for all employees handling the device. 	Recognizable by the heading of the chapter
Instruction-related safety notices	Safety notices containing specific instructions relating to the entire manual or a group of manuals	  
Step-related safety notices	Safety notices containing specific instructions relating only to the step	DANGER WARNING CAUTION
Additional safety notice	Instruction to observe certain safety notices with reference to a location in the document where safety notices containing specific information about dangers, risks and specific instructions for safety procedures can be found	

Danger levels

The safety notices containing specific instructions are identified with a signal word. The signal word represents a certain danger level:

Danger level	If you fail to follow the instruction, then ...	And the consequence is ...
DANGER	an accident will happen	serious bodily injury or death.
WARNING	an accident may happen	possible serious bodily injury or death.
CAUTION	an accident may or will happen.	minor or moderate bodily injury.

Warnings about material damages

Warnings about possible material damages are identified with the word **Attention** in this document.

2 Description

Contents

Topic	Page
Intended use	6
Device models	7
Labels/Markings	8
Identifying the device	9
Layout and operation	10
Technical specifications	12
Pressure loss of the filter insert when new	16

2.1 Intended use

Intended use

The cellular gas filters HON 906 / HON 907 are employed as filters for commercial and industrial gas systems.

Their purpose is to remove gas impurities such dust, rust and other solids in gas-conducting pipelines.

The cellular gas filters can be employed for gases according to DVGW Code of Practice G 600, G 459/II, G 491 and G 495.

Note: The device's operating limits concerning the gas, the operating pressure, and the operating temperature can be found either on the rating plate affixed to the device or in the device's technical specifications.

The use under different operating conditions must be coordinated in consultation with the manufacturer.

Limitations of use

Please observe the following limitations of use:

- Do not use the device for any media other than those mentioned in the intended use or those discussed with and approved by the manufacturer.
- Do not use the device in any installation position other than the one documented in this component documentation.
- Do not use the device against the direction of flow specified on the device and in the component documentation.
- When replacing defective parts, only use original spare parts or manufacturer-approved standard parts.
- Do not attempt to modify or remodel the device on your own.

2.2 Device models

Variants of the cellular gas filters HON 906 / HON 907

The configuration levels of the cellular gas filters HON 906 / HON 907 can be varied in some respects using individual components.

The following individual components are always part of the device:

- Body
- Cover
- Filter insert
- Filter basket
- Filter paper
- Filter insert gasket

The following individual components are installed in some versions of the device:

- Guide tube
- Screw plug
- Magnet insert

All devices can be equipped with a differential pressure measuring system. The following individual components are part of the differential pressure measuring system:

- Differential pressure gauge with reed contact (in the version with electrical remote indication)
- Ball valves

Models of the cellular gas filters HON 906 / HON 907

The following table shows which models are available:

- Gas filter, cellular filter
 - HON 906
 - HON 906 a
 - HON 906 a"t"
- Gas filter, cellular elbow filter
 - HON 907

Versions and designs in this component documentation

The technical specifications and the spare parts lists and spare parts drawings in the appendix describe all the models of the HON 906 / HON 907 cellular gas filter.

The maintenance of the HON 906 / HON 907 cellular gas filters will be described based on the example of the HON 906.

If you have trouble understanding the information in this documentation, contact the manufacturer without fail before starting any work on the device.

2.3 Labels/Markings

Illegible labels

⚠ WARNING

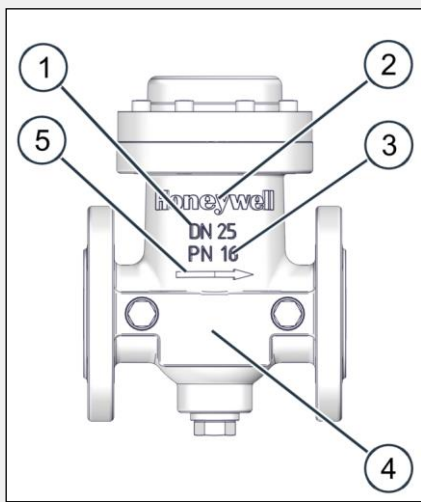
Illegible information on the device poses a risk of injury due to resulting erroneous operation, use, or installation.

Labels, as well as inscriptions and stamping on the device, can eventually become soiled or otherwise unrecognizable to such an extent that users will not be warned effectively of hazards and may be unable to follow required operating instructions. This will pose a risk of injury.

- ⇒ Make sure to always keep all relevant labels in good condition so that they will be easily legible.
- ⇒ Immediately replace damaged and missing labels.

Markings on the cellular gas filters

The following labels/markings can be found on the body of the cellular gas filter:

Figure	No.	Description
	1	Manufacturer
	2	Nominal size
	3	Flange pressure rating
	4	Type plate
	5	Arrow indicating the direction of flow

Nameplates

For the location of the nameplates, as well as a detailed list of the information on them and what it means, please refer to:

Identifying the device (see page 9)

Labels on connection lines

Small color-coded text labels must be used to mark the cellular gas filter's connection lines based on what the lines are used for.

2.4 Identifying the device

Identifying the cellular gas filter

Make sure that this operating manual is the right one for your cellular gas filter. Use the type plates to identify the cellular gas filter.

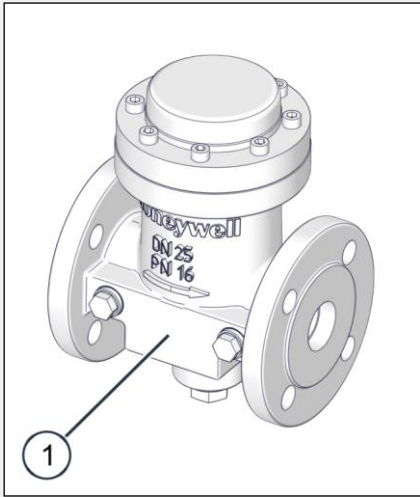
Verifying the technical specifications

Make sure that the on-site conditions match the information on the nameplates and the technical specifications.

Technical specifications (see page 12)

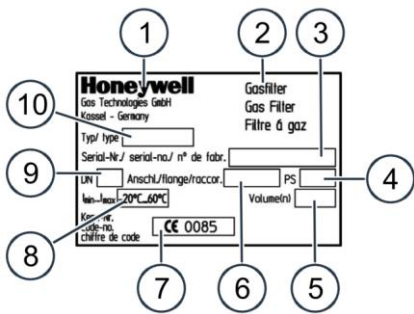
Locating the type plate of the cellular gas filter

The type plate of the cellular gas filter can be found here:

Figure	No.	Meaning
	1	Front of the cellular gas filter

How to read the cellular gas filter's type plate

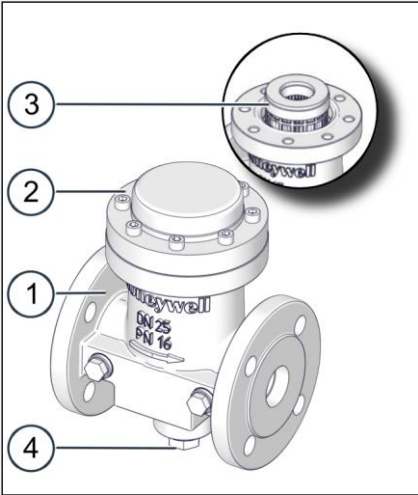
The details on the type plate have the following meaning:

Figure	No.	Meaning
	1	Manufacturer / manufacturer's address
	2	Device name
	3	Serial number of the device
	4	Maximum allowable pressure
	5	Volume
	6	Connection
	7	CE marking
	8	Temperature range
	9	Nominal size
	10	Model name

2.5 Layout and operation

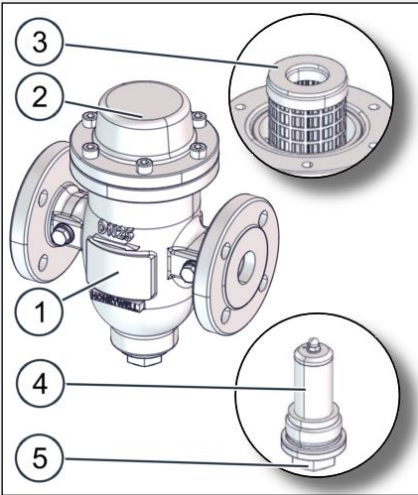
Construction of the HON 906 cellular gas filter

The cellular gas filter is made up of the following individual components:

Figure	No.	Description
	1	Body
	2	Cover
	3	Filter insert
	4	Screw plug

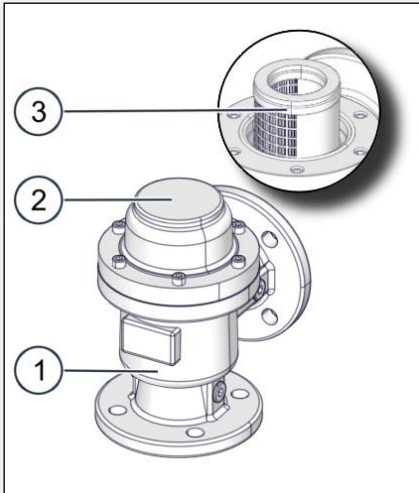
Construction of the HON 906a / HON 906a"t" cellular gas filter

The cellular gas filter is made up of the following individual components:

Figure	No.	Description
	1	Body
	2	Cover
	3	Filter insert
	4	Magnet insert
	5	Screw plug

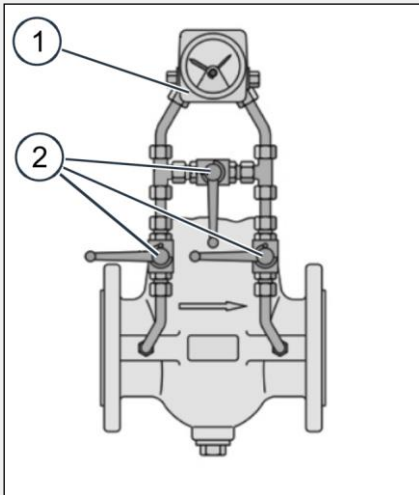
Construction of the HON 907 cellular gas filter

The cellular gas filter is made up of the following individual components:

Figure	No.	Description
	1	Body
	2	Cover
	3	Filter insert

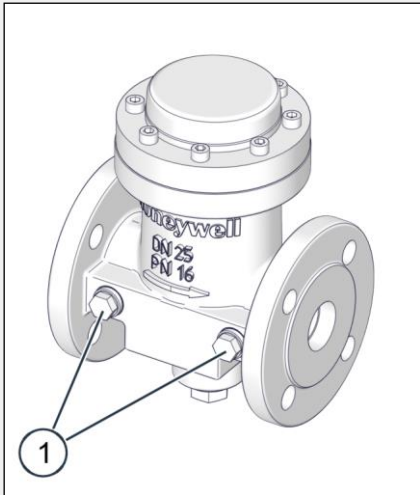
Construction of the differential pressure measuring system with ball valves, HON 906 / HON 907

The differential pressure measuring system is made up of the following individual components:

Figure	No.	Description
	1	Differential pressure gauge with reed contact (only in the version with electrical remote indication)
	2	Ball valve


Cellular gas filter connection lines

The cellular gas filter features the following connections:

Figure	No.	Description
	1	Connection lines for the differential pressure measuring system

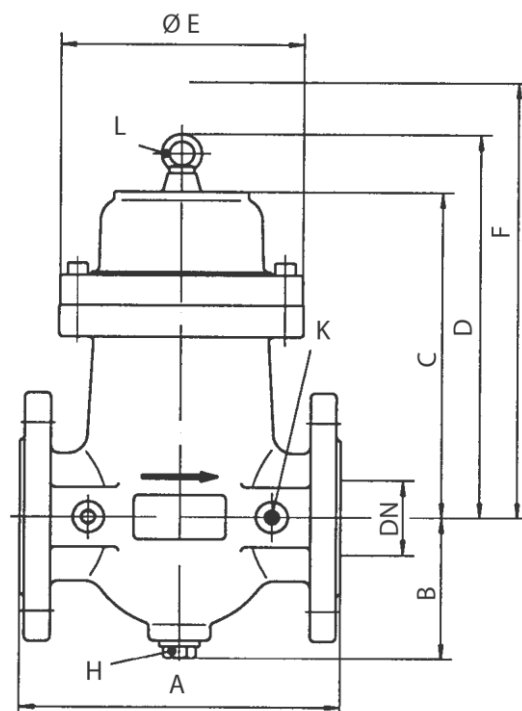
2.6 Technical specifications

Model	HON 906		HON 906a / 906a"t"		HON 907
Max. allowable pressure, PS	16 bar	16 bar	25 bar	20 bar	16 bar
Flange pressure rating	PN 16	PN 16	PN 25	Class 150 RF	PN 16
Nominal size	DN 25	DN 25	DN 25	DN 25	DN 25
	DN 50	DN 50	DN 50	DN 50	DN 50
	DN 80	DN 80	DN 80	DN 80	DN 80
	DN 100	DN 100	DN 100	DN 100	DN 100
	DN 150	-	-	-	-
Connection type	EN flange PN 16		EN flange PN 16, PN 25 ANSI flange, Class 150 RF		EN flange PN 16
Temperature range	Operating/ambient temperature -20 °C to +60 °C				
Filter paper	Pleated specialty paper				
Filter area	DN 25 0.0520 m ²	DN 50 0.193 m ²	DN 80 0.571 m ²	DN 100 0.933 m ²	DN 150 2.256 m ²
Max. flow velocity in the pipe nominal size DN	20 m/s (if the dust load is high, a much lower flow velocity is recommended)				
Filtration efficiency	Filter paper				
	Grade	Design	Retained particle size in µm		Filtration efficiency in %
	1	standard	> 10		99
	2	Polyester reinforced	> 4		
3	Fine pored	> 2			

Model	HON 906	HON 906a / 906a"t"	HON 907
Pressure loss/volumetric flow rate	See <i>Pressure loss of the filter insert when new</i> (see page 25)		
Guide value for new filter insert	$\Delta p \leq 50$ mbar or 20m/s in the nominal size, DN		
Limit value for dirty filter insert	$\Delta p_{\max} = 500$ mbar		
Material	Body	Cast Al alloy (HON 906, DN 25 to DN 100; HON 907 all DN) Ductile cast iron (HON 906, DN 150; HON 906a)	
	Filter basket	Perforated steel sheet, galvanized	
	Gaskets	NBR	
Function, strength and test	DIN 3386, DVGW Technical Rule G 498 and DIN 30690-1		
CE mark acc. to PED and PIN no.		<ul style="list-style-type: none"> ▪ HON 906 ▪ HON 906a / HON 906a"t" ▪ HON 907 	<ul style="list-style-type: none"> ▪ CE-0085 ▪ CE-0085 ▪ CE-0085
Explosion protection		The device's mechanical components do not contain any potential sources of ignition, and accordingly do not fall under the scope of ATEX95(94/9/EC).The electrical components used on the device meet all applicable ATEX requirements.	

Cellular gas filter dimensions

The following figure shows the dimensions of the HON 906 cellular gas filter



L Ring bolt for DN 150

K Connection for differential pressure measuring equipment

M 12 x 1.5 (DN 25)

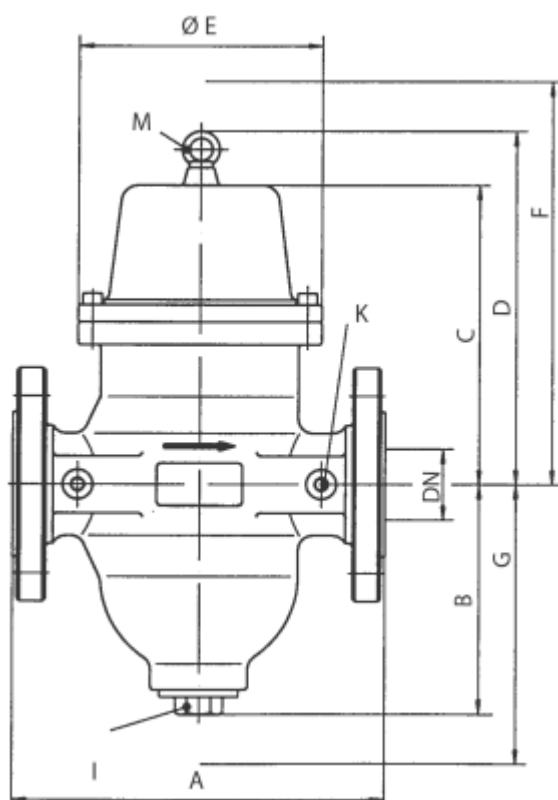
M 16 x 1x5 (>DN 50)

H Plug for condensate drain

G 1/2 (DN 25, DN 50)

G1 (DN 80 to DN 150)

The following figure shows the dimensions of the HON 906a/906a"t" cellular gas filter

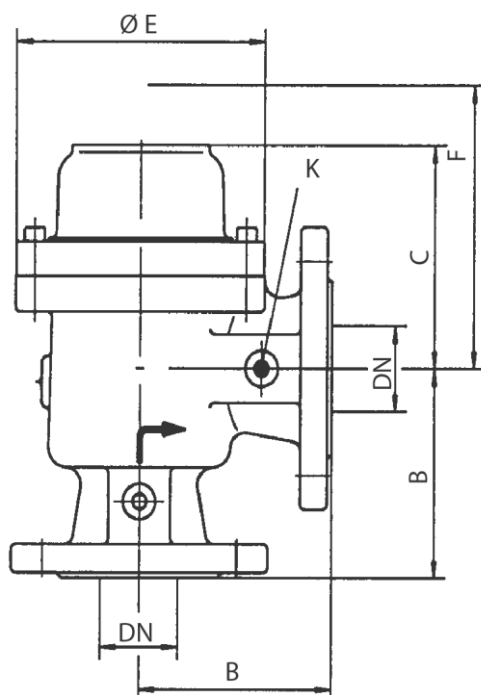


M Ring bolt for DN 80, DN 100

K Connection for differential pressure measuring equipment
 M 12 x 1.5 (DN 25)
 M 16 x 1x5 (>DN 50)

I Plug for condensate drain
 M 36 x 1.5 (DN 25)
 G1 1/2 (DN 50 to DN 100)

The following figure shows the dimensions of the HON 907 cellular gas filter



K Connection for differential pressure measuring equipment
 M 12 x 1.5 (DN 25)
 M 16 x 1x5 (>DN 50)

Dimensions

Model	DN	A [mm]	B [mm]	C [mm]	D [mm]	E [mm]	F [mm]	G [mm]	Contents of the pressure chamber [l]	Weight [kg]
HON 906	025	140	65	130	-	104	250	-	0.45	2.5
	50	210	95	215	-	159	350	-	1.6	7
	80	268	125	380	-	179	600	-	5.1	13
	100	318	160	470	-	214	710	-	11.5	22
	150	400	190	680	760	289	1000	-	34	128
HON 906a 906a*t*	906a 25	190	110	130	-	-	180	200	0.8	8
	50	260	165	220	-	-	320	280	3.5	20
	80	330	210	390	455	-	640	360	11	44
	100	380	245	470	424	-	760	420	20	64
HON 907	025	-	78	87	-	104	195	-	0.3	2
	50	-	123	132	-	159	260	-	1.4	6
	80	-	134	266	-	179	500	-	4.1	11
	100	-	159	331	-	214	570	-	7.5	16

Gas properties

The properties of the gas conveyed through the cellular gas filter HON 906 / HON 907 must meet the requirements specified by the DVGW German Technical and Scientific Association for Gas and Water in the latest version of DVGW Code of Practice G 260 (A).

ATEX specifications

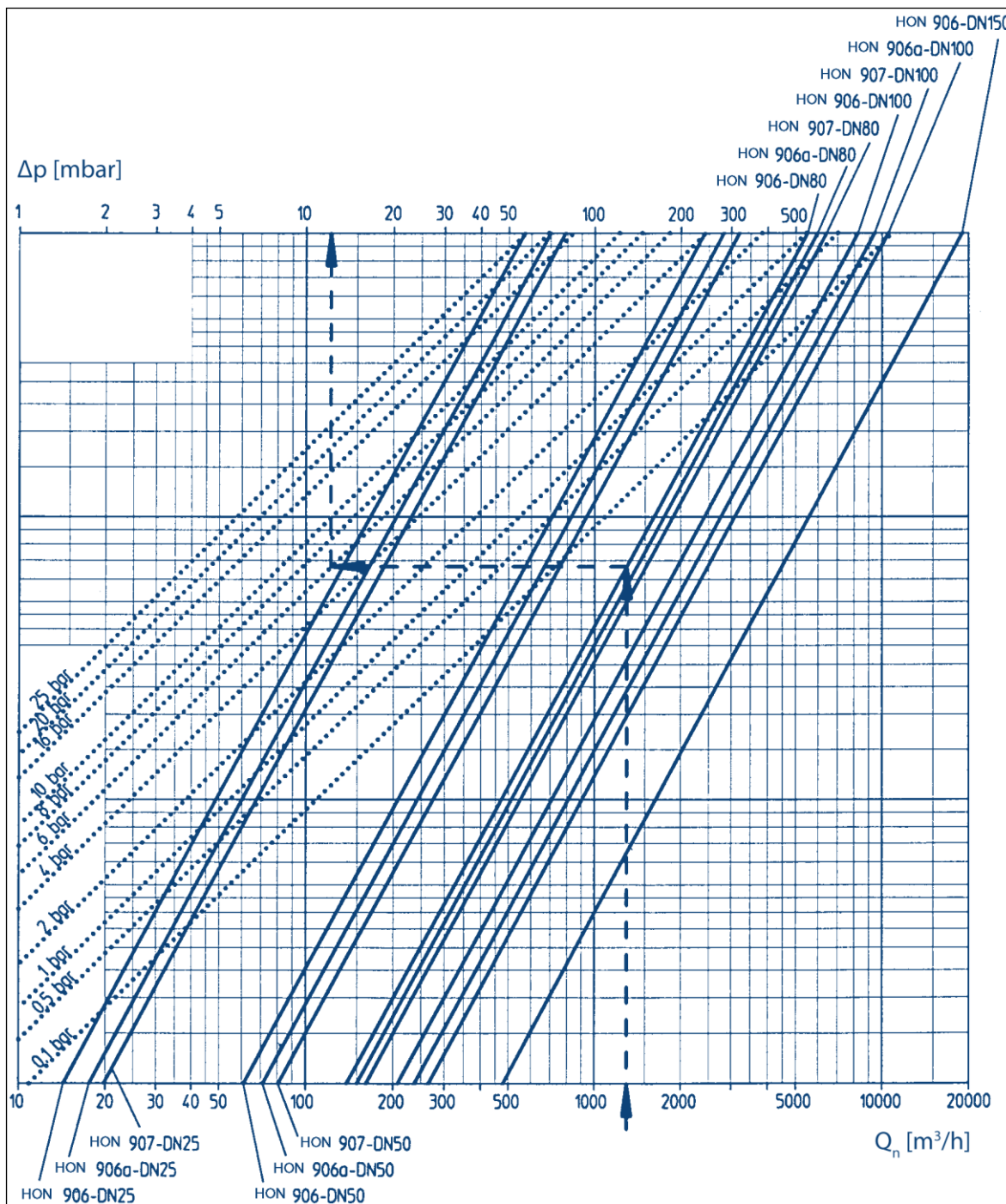
The device's mechanical components do not contain any potential sources of ignition, and accordingly do not fall under the scope of ATEX 95 (94/9/EC). The electrical components used on the device meet all applicable ATEX requirements.

2.7 Pressure loss of the filter insert when new

Filter type 1 - standard model

NOTE:

- The values are for natural gas with $p_n = 0.83 \text{ kg/m}^3$ and $t = 15 \text{ }^\circ\text{C}$
- When other gas types are used, the pressure loss is calculated as $p = p_{n\text{Gas}} / 0.83 \times p_{\text{Diagram}}$



Δp : Pressure loss $\Delta p_{\text{Diagram}}$ in mbar

Q_n : Volumetric flow rate Q_n in m^3/h

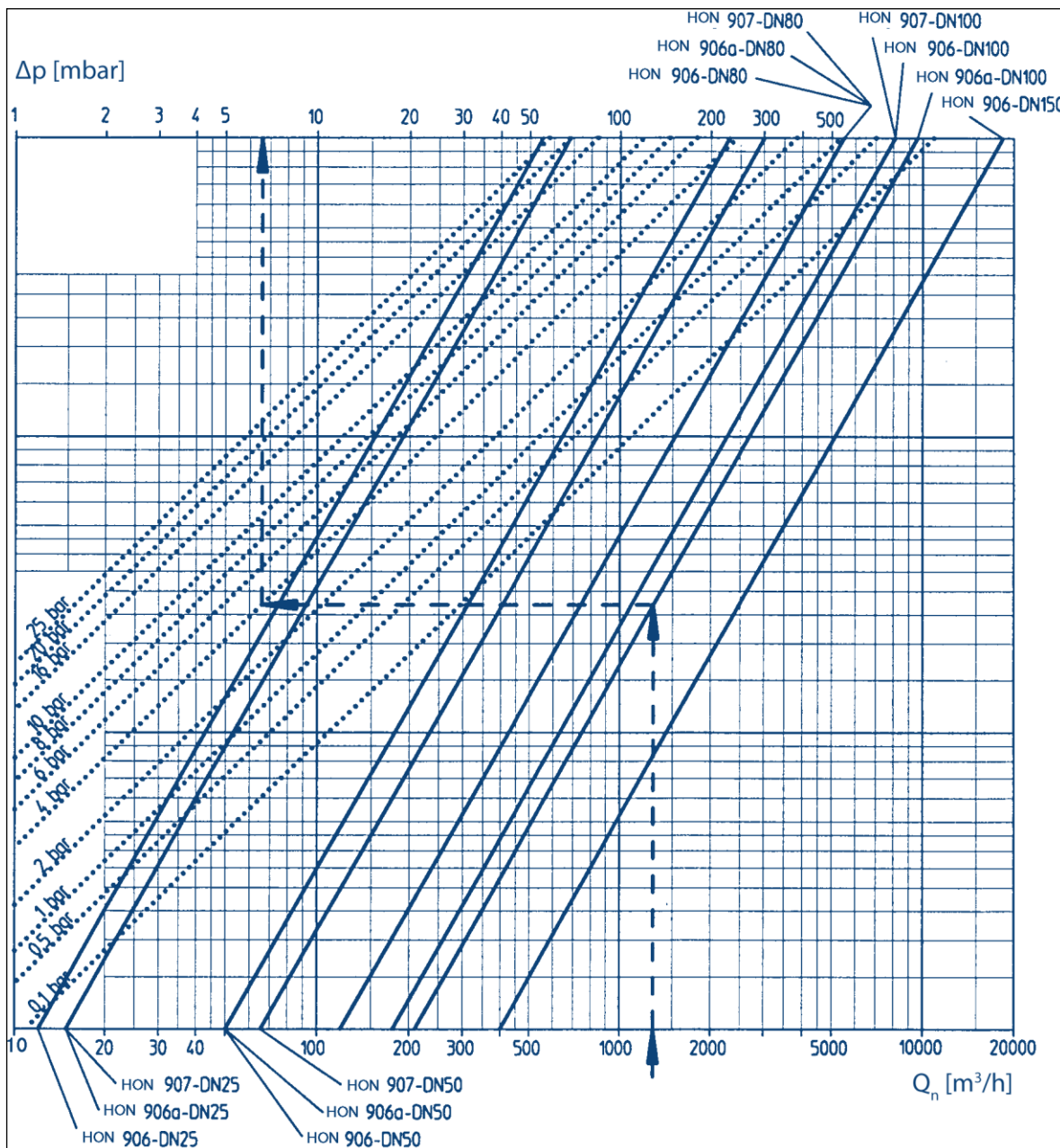
Example :

- $Q_n = 1300 \text{ m}^3/\text{h}$
- Operating pressure: 6 bar
- HON 906 DN 80
- $\Delta p_{\text{Diagram}} 12 \text{ mbar}$

Filter type 2 - polyester reinforced model

NOTE:

- The values are for natural gas with $p_n = 0.83 \text{ kg/m}^3$ and $t = 15 \text{ }^\circ\text{C}$
- When other gas types are used, the pressure loss is calculated as $p = p_{n\text{Gas}} / 0.83 \times p_{\text{Diagram}}$



Δp : Pressure loss $\Delta p_{\text{Diagram}}$ in mbar

Q_n : Volumetric flow rate Q_n in m^3/h

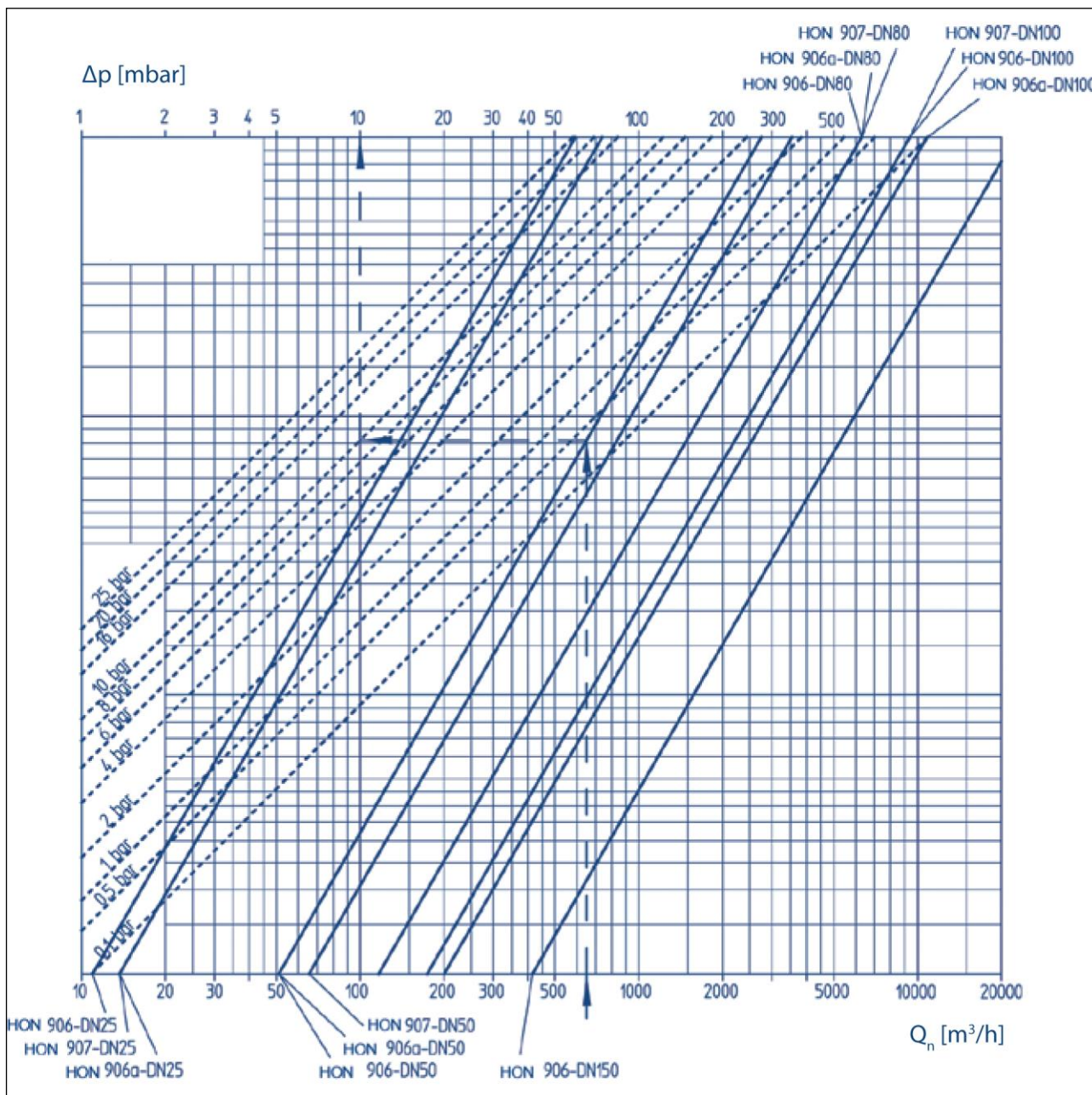
Example :

- $Q_n = 1300 \text{ m}^3/\text{h}$
- Operating pressure: 4 bar
- HON 906a DN 100
- $\Delta p_{\text{Diagram}} 6.5 \text{ mbar}$

**Filter type 3 -
fine-pored model**

NOTE:

- The values are for natural gas with $p_n = 0.83 \text{ kg/m}^3$ and $t = 15 \text{ }^\circ\text{C}$
- When other gas types are used, the pressure loss is calculated as $p = p_{n\text{Gas}} / 0.83 \times p_{\text{Diagram}}$



Δp : Pressure loss $\Delta p_{\text{Diagram}}$ in mbar
 Q_n : Volumetric flow rate Q_n in m^3/h

Example :

- $Q_n = 650 \text{ m}^3/\text{h}$
- Operating pressure: 10 bar
- HON 906 DN 50
- $\Delta p_{\text{Diagram}} 10 \text{ mbar}$

3 Safety

Contents

Topic	Page
Basic safety rules	19
Requirements concerning the workforce, personal protective gear, workplaces	20

3.1 Basic safety rules

Target group of these rules	These rules are intended for any individuals handling the device.
Purpose of these rules	These rules are designed to make sure that any individuals working with or on the device will thoroughly familiarize themselves with the corresponding hazards and safety measures and will observe the safety notices contained in this component documentation and on the device. If you do not follow these rules, there is a risk of injury including death and material damages.
How to use this component documentation	<p>Observe the following rules:</p> <ul style="list-style-type: none"> ▪ Read the chapter entitled Safety and the chapters relating to your responsibilities in their entirety. It is vital that you have understood these contents. ▪ Always keep this component documentation in the vicinity of the device so that you can consult it when necessary. ▪ Include this component documentation if you are transferring ownership of the device.
Handling the device	<p>Observe the following rules:</p> <ul style="list-style-type: none"> ▪ Only individuals who meet the requirements set forth in this component documentation have permission to work with/on the device. ▪ The device's intended use includes its use in hazardous locations. All work with and on the device must be carried out only after the presence of an explosive atmosphere has been fully ruled out. ▪ Only use the device for the intended purpose. Never use the device for any other, potentially logical purposes. ▪ Follow all the safety measures outlined in this component documentation and on the device. In particular, wear the mandatory personal protective gear. ▪ Do not modify the device in any way, e. g. by removing parts or adding unapproved parts. In particular, you have no permission to modify or disable any safety contrivances. ▪ When replacing defective parts, only use original spare parts or manufacturer-approved standard parts.

Requirements concerning the workforce

Personnel must meet the following requirements:

- All personnel must meet the requirements corresponding to their duties.
- All personnel must read and understand this component documentation before working with/on the device.
- All occupational health and safety regulations that apply in your country must be complied with.
- All personnel must be provided with the personal protective equipment required for their work. This personal protective equipment must be in good condition at all times.
- All personnel must wear the personal protective equipment required for their work.

Conduct in the event of accidents

The device is designed and built such that the employees can work with it without being at risk. In spite of all the precautions, accidents can happen under unfavorable circumstances. Always consult the directives of your company concerning the protection of the workforce.

3.2 Requirements concerning the workforce, personal protective gear, workplaces

Requirements concerning the workforce

Individuals tasked with handling the device must meet the following requirements:

Personnel	Responsibilities	Required qualification
Mechanical fitter	<ul style="list-style-type: none"> ▪ Mechanical removal and installation ▪ Maintenance and servicing 	<ul style="list-style-type: none"> ▪ Professional training and experience operating pressure equipment and systems ▪ Knowledge of the relevant standards and regulations ▪ Ability to identify and avoid dangers autonomously

Requirements for the personal protective gear

Any persons handling the device must be equipped with the following personal protective gear:

Task	Required personal protective gear
Mechanical activities involved in maintenance, storage, disposal	<ul style="list-style-type: none"> ▪ Safety boots with protection for electrostatic discharge (ESD) ▪ Safety gloves

Workplace requirements

To ensure the safe handling of the device, the personnel must remain at the workplaces intended for performing their tasks.

The workplaces for performing the various tasks are at the following locations:

Task	Workplaces
<ul style="list-style-type: none"> ▪ Maintenance, repairs ▪ Storage ▪ Disposal 	All around the device, depending on the task

4 Maintenance

Contents

Topic	Page
Maintenance schedule	21
Preparing for the maintenance	21
Performing maintenance on cellular gas filters HON 906 / HON 907	22
Completing the maintenance	25

4.1 Maintenance schedule

Meaning

The maintenance schedule provides an overview of the periodically required maintenance.

Maintenance schedule

Since the maintenance intervals are highly dependent on the operating conditions and the gas quality, it is impossible to provide set maintenance intervals. It is recommended to use maintenance intervals conforming to the specifications in DVGW Code of Practice G 495. In addition, the need for maintenance must be determined and documented on the basis of operational requirements and experience.

Maintenance must be carried out in compliance with all federal and state laws and regulations, as well as with the local rules and regulations set forth by the relevant utilities and authorities and any other applicable regulations.

4.2 Preparing for the maintenance

Preparation work for cellular gas filter maintenance

Proceed as follows:

Step	Description	Explanation
1	Place the maintenance and service parts at the ready	Refer to the topic <i>Explanation of spare parts</i> (see page 28) to find out which spare parts drawings belong to your device model and have the corresponding maintenance and service parts ready before starting maintenance. <ul style="list-style-type: none"> The spare parts that are always required for maintenance of the cellular gas filter are listed in the spare parts kits for the respective cellular gas filter. Spare part drawings, spare parts kits and spare parts lists are listed in the <i>appendix</i> (see page 28).
2	Have the required lubricants and threadlockers ready	For specifications concerning the lubricants and threadlockers that must be used, please refer to the sections of the same name under <i>Lubricants and threadlockers</i> (see page 48).
3	Establishing the depressurized status	WARNING! Risk of serious injury posed by pressurized components moving in an uncontrolled manner when handled improperly. If not handled properly or in the event of a defect, gas can escape from pressurized components under high pressure and cause serious injuries and even death. Before you start working on these components: <ul style="list-style-type: none"> Close all connections leading to the gas-carrying line. Establish a depressurized status. Residual amounts of energy must be depressurized as well.

4.3 Performing maintenance on cellular gas filters HON 906 / HON 907

Falling components



Crush and impact hazard posed by components falling or toppling over accidentally.

When working with heavy components that have been removed or are yet to be installed, injury may result if the components start moving in an uncontrolled manner, e.g., fall down from the working surface or topple over.

- ⇒ Place removed components exclusively on level, horizontal working surfaces with enough load-bearing capacity.
- ⇒ If necessary, secure removed components so that they will not fall or topple over.
- ⇒ Wear the required personal protective equipment.
- ⇒ Exercise caution when performing the relevant tasks.

Cleaning

Observe the following cleaning instructions:

- Before assembly, all parts must be cleaned in order to remove any foreign particles (swarf) and soiling.
- If screws, bolts, or washers are replaced with identical new parts, any oil on these new parts must first be removed.

Tightening torques

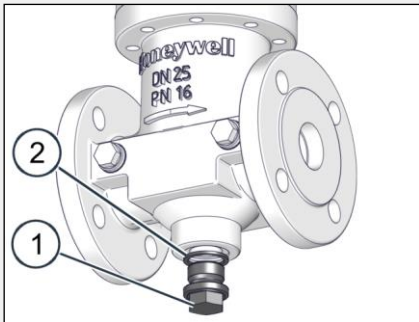
Observe the tightening torques below when following the instructions in this section:

Model	Part	Tightening torque				
		DN 25	DN 50	DN 80	DN 100	DN 150
HON 906	Cylinder screws	10 Nm (7.4 ft lbs)	20 Nm (15 ft lbs)	20 Nm (15 ft lbs)	20 Nm (15 ft lbs)	35 Nm (26 ft lbs)
HON 906a	Cylinder screws	20 Nm (15 ft lbs)	20 Nm (15 ft lbs)	30 Nm (22 ft lbs)	30 Nm (22 ft lbs)	-
HON 906a**	Cylinder screws	25 Nm (18.4 ft lbs)	25 Nm (18.4 ft lbs)	35 Nm (26 ft lbs)	35 Nm (26 ft lbs)	-
HON 907	Cylinder screws	10 Nm (7.4 ft lbs)	20 Nm (15 ft lbs)	20 Nm (15 ft lbs)	20 Nm (15 ft lbs)	-

Replacing the sealing rings of the cellular gas filter

Proceed as follows:

Figure	Step	Description
	1	Unscrew the 2 screw plugs (item 1) and replace the 2 sealing rings (item 2). Replace the sealing rings on the opposite side as well.

Figure	Step	Description
	2	Unscrew the screw plug (item 1) and replace the sealing ring (item 2).

Replacing the filter insert of the cellular gas filter

Proceed as follows:

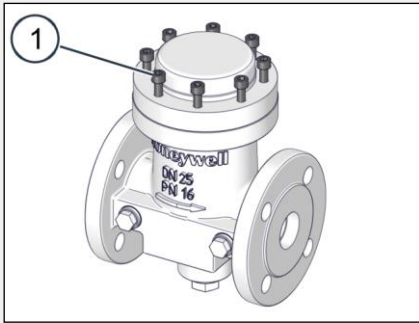
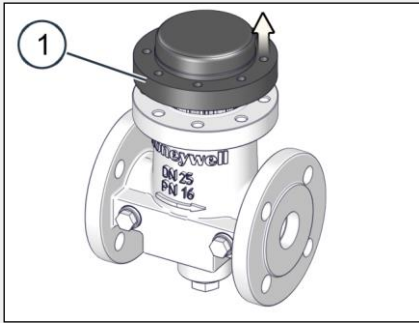
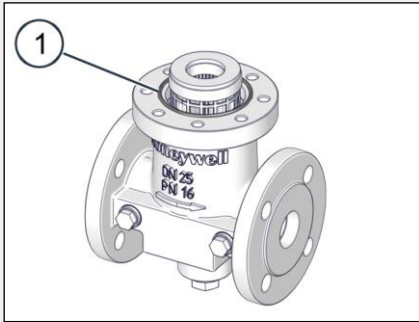
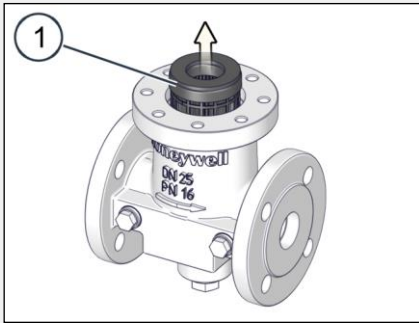
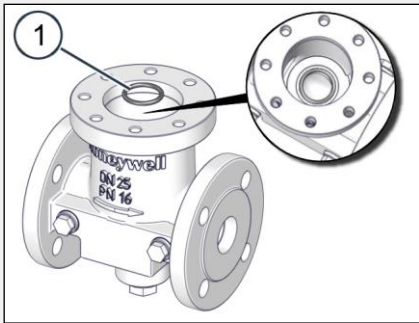
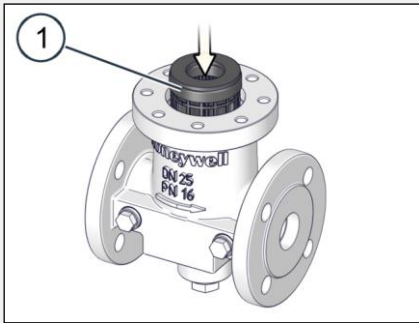
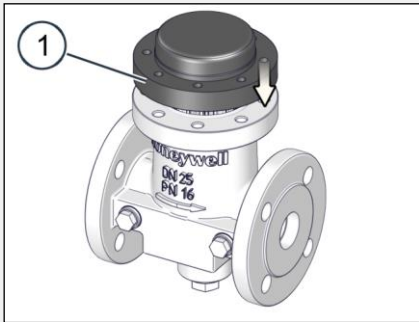
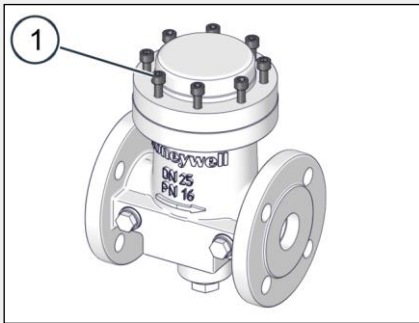
Figure	Step	Description
	1	Unscrew the screws (1) on the cover.
	2	Lift off the cover (item 2).
	3	Replace the O-ring (item 1) with a new, lubricated O-ring. Note: See the appendix for the lubricants to be used.
	4	Remove the filter insert (item 1).

Figure	Step	Description
	5	Replace the O-ring (item 1) with a new, lubricated O-ring. Note: See the appendix for the lubricants to be used.
		Install the new filter insert (item 1).
		Put on the cover (item 1).
		Tighten the screws (1) of the cover in a criss-cross sequence. Tightening torque: Table <i>Tightening torques</i>

Final inspection

Conduct a final inspection to check whether the following criteria are met:

- All screw connections on the cellular gas filter have been checked to make sure that they have a secure fit.

If ...	then ...
at least one criterion is not met	you should correct the error before proceeding with the next task.
all criteria are met	you may proceed with the next task.

Next task

Depending on the specific controller version, proceed as indicated in the relevant section:

Completing the maintenance (see page 25)

4.4 Completing the maintenance

Renewed start-up

Please note that the internal and external leak tightness of the entire gas valve unit must be checked and established before start-up or renewed start-up. Keep in mind that it is always necessary to check the entire gas pressure regulator for internal and external leaks and fix them before putting it into operation for the first time or putting it back into operation.

Next task

Depending on what you want to do next, proceed as indicated in the relevant section:

- *Storing the device* (see page 26)
 - *Disposing of the device* (see page 27)
-

5 Storage and disposal

Contents

Topic	Page
Storing the device	26
Disposing of the device	27

5.1 Storing the device

Storage of the packaging units

Observe the following rules:

- Do not store the device outdoors.
- Store the device in a dry and dust-free environment on a flat surface.
- Do not expose the device to any aggressive media, ozone or ionizing radiation or to direct heat sources.
- Storage conditions:
 - Temperature: 0 °C to 25 °C (32 °F to 77 °F)
 - Relative humidity: < 55%.
- Avoid mechanical vibrations.
- Storage periods:
 - When storing the device for up to one year:
Store the device in its original packaging and in the same condition it was delivered. All protective caps of the device must remain in place.
 - If the device is stored longer than 1 year (e.g., as a backup device):
Store the device in the original packaging as it was originally delivered and check it annually for damage and soiling. Consider the storage period in the maintenance cycles.

Note: Please also observe any storage information provided on the packaging.

Storage of spare parts

The following rules apply to the storage of spare parts:

- Apply an appropriate protective agent to assemblies at risk of corrosion.
 - If stored correctly, O-rings and gaskets should not be kept longer than 7 years.
 - Store the spare parts in the original package until they are used.
-

Storing devices that have already been in operation and that are intended to be put back into operation later on

Observe the following rules:

- All device openings and fittings must be sealed and protected from soiling and damage.
 - The device's maintenance condition must be indicated with a label:
 - Date when maintenance was last performed
 - Operating times and operation cycles since the last time maintenance was performed
 - Do not store the device outdoors.
 - Store the device in a dry and dust-free environment on a flat surface.
 - Do not expose the device to any aggressive media, ozone or ionizing radiation or to direct heat sources.
 - Storage conditions:
 - Temperature: 0 °C to 25 °C (32 °F to 77 °F)
 - Relative humidity: < 55%.
 - Avoid mechanical vibrations.
 - Storage periods: Check the device for damage and soiling at least annually. When it comes to maintenance cycles, take the preceding operating time into account in addition to the storage time.
-

5.2 Disposing of the device

Appropriate disposal

Comply with the legally stipulated disposal rules. Observe the following details pertaining to the appropriate disposal (not all of the items may be applicable to your device):

- Dispose of the metals according to their types and grades (steel scrap, cast iron scrap, light alloy scrap, nonferrous heavy metal scrap, synthetic rubber scrap, electronic scrap).
 - Recycle elements made of synthetic materials.
 - Dispose of any other components according to the quality of the materials.
-

6 Appendix

Contents

Topic	Page
Additional information regarding spare parts	28
HON 906: Spare parts list	30
HON 906a / 906a"t": Spare parts list	35
HON 907: Spare parts list	39
Differential pressure measuring system: Spare parts list	42
Maintenance and service parts for cellular gas filter - HON 906	43
Maintenance and service parts for the cellular gas filters - HON 906a/906a"t"	44
Maintenance and service parts for cellular gas filter - HON 907	46
Maintenance and service parts - differential pressure measuring system	47
Lubricants and threadlockers	48

6.1 Additional information regarding spare parts

Spare parts categories Spare parts fall into the following categories:

Spare parts category	Definition
Maintenance part	Spare parts that always have to be replaced during maintenance.
Servicing parts	Spare parts that need to be checked during maintenance and that must be replaced if necessary due to their condition.
	Spare parts that qualified personnel employed by the company operating the device is allowed to replace in order to convert the device (e.g., when changing the pressure range).
	Spare parts that qualified personnel employed by the company operating the device is allowed to replace in the event of a fault or defect.
Miscellaneous spare part	Parts that are listed in the spare part drawings in addition to maintenance and servicing parts so as to improve communications between the customer and the manufacturer, but that are not allowed to be ordered or replaced without first contacting the manufacturer.

Maintenance and service parts for cellular gas filter

- The spare parts always required for maintenance of the cellular gas filter are grouped together into spare parts kits appropriate for the device in question. Each spare parts kit has its own part number (part no.).
- Individual maintenance and service parts can be ordered using the corresponding part number, which is specified in the bill of materials for the respective device. The required number of maintenance and/or service parts is specified under the relevant part number in the "Part No." column. If no quantity is specified, this means that only one unit is required.

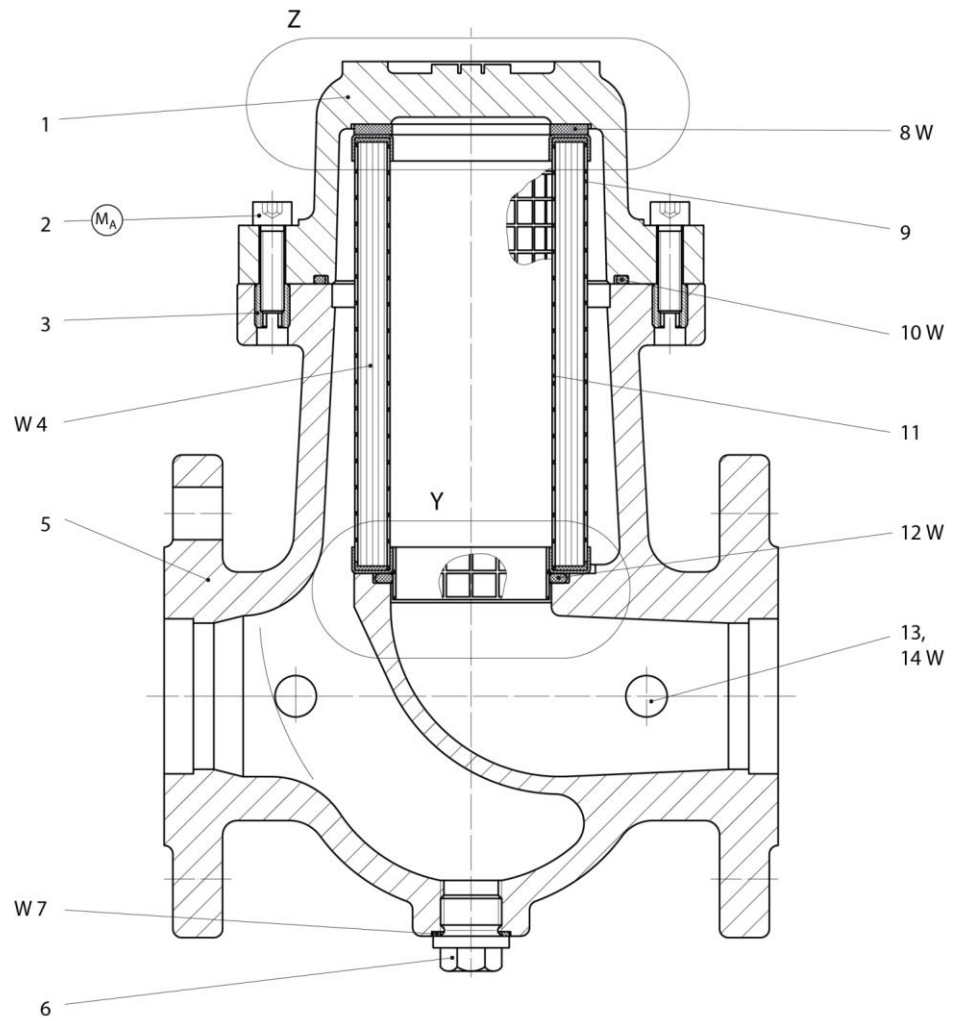
Overview of spare parts lists

The spare parts lists are subdivided as follows:

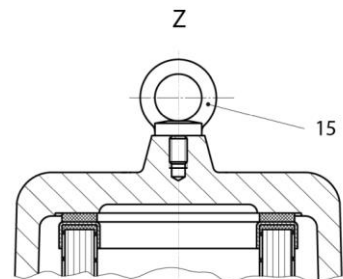
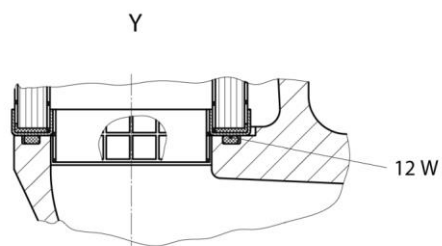
- HON 906: Spare parts list
 - Spare part drawing, HON 906
 - Spare parts kits for HON 906
 - Maintenance parts for HON 906
- HON 906a / HON 906a"t": Spare parts list
 - Spare part drawing HON 906a / HON 906a"t"
 - Spare parts kits for HON 906a
 - Spare parts kits for HON 906a"t"
 - Maintenance parts for HON 906a
 - Maintenance parts for HON 906a"t"
- HON 907: Spare parts list
 - Spare part drawing, HON 907
 - Spare parts kits for HON 907
 - Maintenance parts for HON 907
- Differential pressure measuring system: Spare parts list
 - Spare part drawing, differential pressure measuring system
 - Spare parts kits for differential pressure measuring system
 - Maintenance parts for differential pressure measuring system

6.2 HON 906: Spare parts list

Spare part drawing,
HON 906



Version for DN 150



Spare parts kit for
HON 906 with filter
paper in standard
model

Nominal size	No. / Letter	Qty	Name	Part no.
DN 25			Spare parts kit for filter paper with particle size of 10µm	K906-001
	7	1	Gasket	18684-RMK
	10	1	O-ring	20513-RMK
			O-ring*	20336
	12	1	O-ring	21269
	14	4	Gasket	18740-RMK
			1	Filter insert**

Nominal size	No. / Letter	Qty	Name	Part no.
DN 50			Spare parts kit for filter paper with particle size of 10µm	K906-002
	7	1	Gasket	18684-RMK
	10	1	O-ring	20509
			O-ring*	20265-RMK
	12	1	O-ring	21271
	14	4	Gasket	18789
			1	Filter insert**

Nominal size	No. / Letter	Qty	Name	Part no.
DN 80			Spare parts kit for filter paper with particle size of 10µm	K906-003
	7	1	Gasket	18683-RMK
	10	1	O-ring	20443-RMK
			O-ring*	20479
	12	1	O-ring	21262-RMK
	14	4	Gasket	18789
			1	Filter insert**

Nominal size	No. / Letter	Qty	Name	Part no.
DN 100			Spare parts kit for filter paper with particle size of 10µm	K906-004
	7	1	Gasket	18683-RMK
	10	1	O-ring	20514-RMK
			O-ring*	20269-RMK
	12	1	O-ring	21272-RMK
	14	4	Gasket	18789
			1	Filter insert**

Nominal size	No. / Letter	Qty	Name	Part no.
DN 150			Spare parts kit for retained particle size of 10µm	K906-005
	7	1	Gasket	18683-RMK
	10	1	O-ring	20545
			O-ring*	20539-RMK
	12	1	O-ring	20539-RMK
	14	4	Gasket	18789
			1	Filter insert**

*) O-ring for devices up to year of manufacture of 2006

**) The filter insert is composed of the following components together: Filter basket, filter paper and rubber rings

Spare parts kit for HON 906 with filter paper in the fine-pored version

Nominal size	No. / Letter	Qty	Name	Part no.
DN 25			Spare parts kit for filter paper with filtration efficiency of 2µm	K906-006
	7	1	Gasket	18684-RMK
	10	1	O-ring	20513-RMK
			O-ring*	20336
	12	1	O-ring	21269
	14	4	Gasket	18740-RMK
			1	Filter insert

Nominal size	No. / Letter	Qty	Name	Part no.
DN 50			Spare parts kit for filter paper with filtration efficiency of 2 μ m	K906-007
	7	1	Gasket	18684-RMK
	10	1	O-ring	20509
			O-ring*	20265-RMK
	12	1	O-ring	21271
	14	4	Gasket	18789
			1	Filter insert

Nominal size	No. / Letter	Qty	Name	Part no.
DN 80			Spare parts kit for filter paper with filtration efficiency of 2 μ m	K906-008
	7	1	Gasket	18683-RMK
	10	1	O-ring	20443-RMK
			O-ring*	20479
	12	1	O-ring	21262-RMK
	14	4	Gasket	18789
			1	Filter insert

Nominal size	No. / Letter	Qty	Name	Part no.
DN 100			Spare parts kit for filter paper with filtration efficiency of 2 μ m	K906-009
	7	1	Gasket	18683-RMK
	10	1	O-ring	20514-RMK
			O-ring*	20269-RMK
	12	1	O-ring	21272-RMK
	14	4	Gasket	18789
			1	Filter insert

Nominal size	No. / Letter	Qty	Name	Part no.
DN 150			Spare parts kit for filter paper with filtration efficiency of 2µm	K906-010
	7	1	Gasket	18683-RMK
	10	1	O-ring	20545
		1	O-ring*	20539-RMK
	12	1	O-ring	20539-RMK
	14	4	Gasket	18789
		1	Filter insert	15017180

*) O-ring for devices up to year of manufacture of 2006

***) The filter insert is composed of the following components together: Filter basket, filter paper and rubber rings

Maintenance parts for HON 906

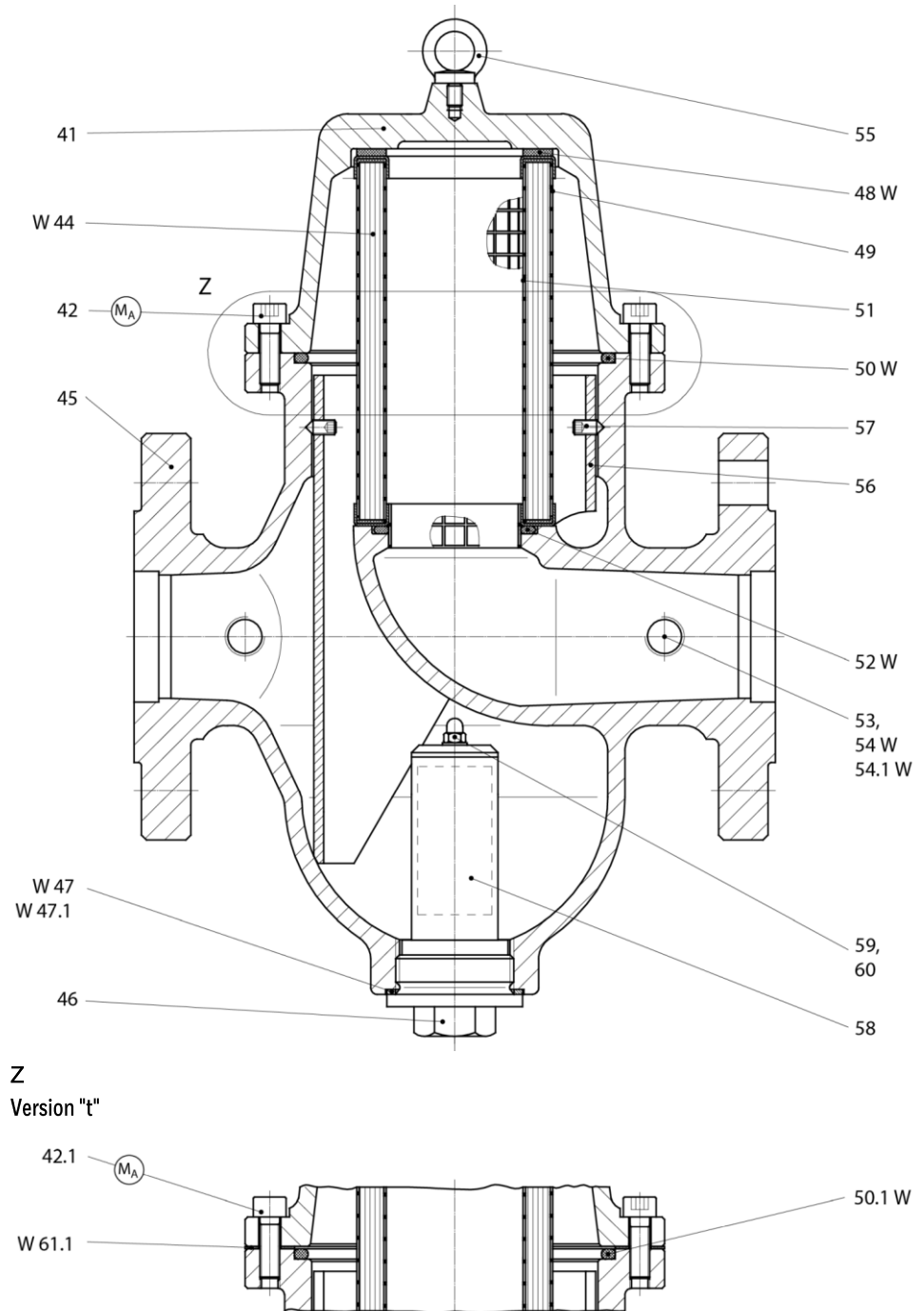
No. / Letter	Name	Qty	Part no.				
			DN 25	DN 50	DN 80	DN 100	DN 150
4	Filter paper 1, Standard (>10µm)	1	15013100	15014100	15015100-RMK	15016100	15017100
4	Filter paper 2, Polyester reinf. (> 4µm)	1	15013173	15014173	15015173	15016173	15017173
4	Filter paper 3, fine-pored (> 2µm)	1	15013180	15014180	15015180	15016180	15017180
4	Rubber ring	2	15013104	15014104	15015104	15016104	15017104
7	Gasket	1	18684-RMK	18684-RMK	18683-RMK	18683-RMK	18683-RMK
8	Rubber ring (glued on item 11)	1	15013105	15014105	15015105	15016105	15017105
10	O-ring	1	20513-RMK	20509	20443-RMK	20514-RMK	20545
*12	O-ring as of ser. no. 80595	1	21269				
*12	O-ring as of ser. no. 58937	1		21271			
*12	O-ring as of ser. no. 61060	1			21262-RMK		
*12	O-ring as of ser. no. 60547	1				21272-RMK	
12	O-ring	1					20539-RMK
14	Gasket	4	18740-RMK	18789	18789	18789	18789
	Filter insert 1, finished part (>10µm)		15013100	15014100	15015100-RMK	15016100	15017100
	Filter insert 2, finished part (>4µm)		15013170	15014170	15015170	15016170	15017170
	Filter insert 3, finished part (>2µm)		15013180	15014180	15015180	15016180	15017180

*) When ordering spare parts, please consult with HON and specify the serial number!

***) The filter insert is composed of the following components together: Filter basket, filter paper and rubber rings

6.3 HON 906a / 906a"t": Spare parts list

Spare part drawing
 HON 906a / HON
 906a"t"



Spare parts kit for
HON 906a with filter
paper in standard
model

Nominal size	No. / Letter	Qty	Name	Part no.
DN 25			Spare parts kit for filter paper with particle size of 10µm	K906a-001
	47	1	Gasket	18720
	50	1	O-ring	21270
	52	1	O-ring	21269
	54	4	Gasket	18740-RMK
		1	Filter insert*	15013100

Nominal size	No. / Letter	Qty	Name	Part no.
DN 50			Spare parts kit for filter paper with particle size of 10µm	K906a-002
	47	1	Gasket	18791-RMK
	50	1	O-ring	21273-RMK
	52	1	O-ring	21271
	54	4	Gasket	18789
		1	Filter insert*	15014100

Nominal size	No. / Letter	Qty	Name	Part no.
DN 80			Spare parts kit for filter paper with particle size of 10µm	K906a-003
	47	1	Gasket	18791-RMK
	50	1	O-ring	21274-RMK
	52	1	O-ring	21262-RMK
	54	4	Gasket	18789
		1	Filter insert*	15015100-RMK

Nominal size	No. / Letter	Qty	Name	Part no.
DN 100			Spare parts kit for filter paper with particle size of 10µm	K906a-004
	47	1	Gasket	18791-RMK
	50	1	O-ring	21275-RMK
	52	1	O-ring	21272-RMK
	54	4	Gasket	18789
		1	Filter insert*	15016100

*) The filter insert is composed of the following components together: Filter basket, filter paper and rubber rings

Spare parts kit for
HON 906a with filter
paper in the fine-
pored version

Nominal size	No. / Letter	Qty	Name	Part no.
DN 25			Spare parts kit for retained particle size of 2µm	K906a-005
	47	1	Gasket	18720
	50	1	O-ring	21270
	52	1	O-ring	21269
	54	4	Gasket	18740-RMK
		1	Filter insert*	15013180

Nominal size	No. / Letter	Qty	Name	Part no.
DN 50			Spare parts kit for retained particle size of 2µm	K906a-006
	47	1	Gasket	18791-RMK
	50	1	O-ring	21273-RMK
	52	1	O-ring	21271
	54	4	Gasket	18789
		1	Filter insert*	15014180

Nominal size	No. / Letter	Qty	Name	Part no.
DN 80			Spare parts kit for retained particle size of 2µm	K906a-007
	47	1	Gasket	18791-RMK
	50	1	O-ring	21274-RMK
	52	1	O-ring	21262-RMK
	54	4	Gasket	18789
		1	Filter insert*	15015180

Nominal size	No. / Letter	Qty	Name	Part no.
DN 100			Spare parts kit for retained particle size of 2µm	K906a-008
	47	1	Gasket	18791-RMK
	50	1	O-ring	21275-RMK
	52	1	O-ring	21272-RMK
	54	4	Gasket	18789
		1	Filter insert*	15016180

*) The filter insert is composed of the following components together: Filter basket, filter paper and rubber rings

Maintenance parts, HON 906a and HON 906a"t"

No. / Letter	Name	Qty	Part no.				
			DN 25	DN 50	DN 80	DN 100	DN 150
44	Filter paper 1, Standard (>10 µm)	1	15013103	15014103	15015103	15016103	
44	Filter paper 2, Polyester reinf. (> 4 µm)	1	15013173	15014173	15015173	15016173	
44	Filter paper 3, fine-pored (> 2 µm)	1	15013183	15014183	15015183	15016183	
44	Rubber ring	2	15013104	15014104	15015104	15016104	
48	Rubber ring (glued on item 11)	1	15013105	15014105	15015105	15016105	
52	O-ring	1	21269	21271	21262-RMK	21272-RMK	
	Filter insert 1, finished part (>10 µm)	1	15013100	15014100	15015100-RMK	15016100	
	Filter insert 2, finished part (>4 µm)	1	15013170	15014170	15015170	15016170	
	Filter insert 3, finished part (>2 µm)	1	15013180	15014180	15015180	15016180	

Maintenance parts for HON 906a

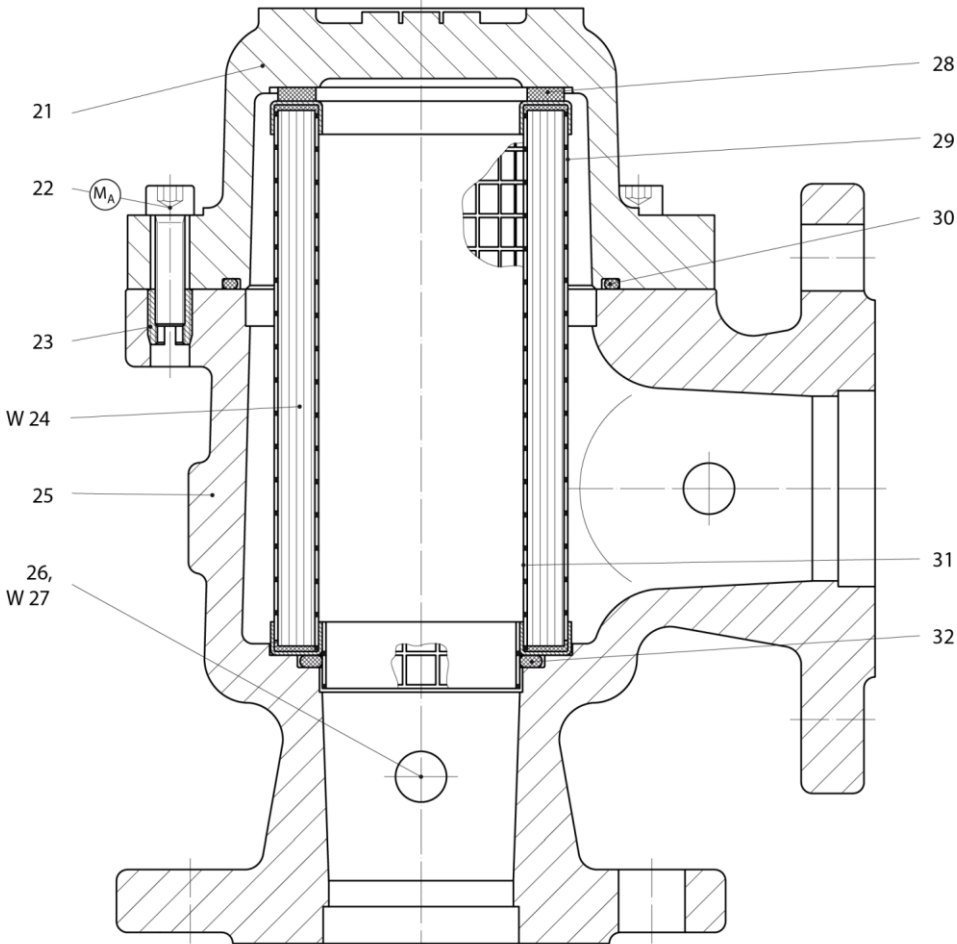
No. / Letter	Name	Qty	Part no.				
			DN 25	DN 50	DN 80	DN 100	DN 150
47	Gasket	1	18720	18791-RMK	18791-RMK	18791-RMK	
50	O-ring	1	21270	21273-RMK	21274-RMK	21275-RMK	
54	Gasket	4	18740-RMK	18789	18789	18789	

Maintenance parts for HON 906a"t"

No. / Letter	Name	Qty	Part no.				
			DN 25	DN 50	DN 80	DN 100	DN 150
47.1	Gasket	1	518007	18801	18801	18801	
50.1	O-ring	1	520045	520076	520077	520078	
54.1	Gasket	4	18809	18803	18803	18803	
61.1	Gasket	1	15013502	15014502	15015502	15016502	

6.4 HON 907: Spare parts list

Spare part drawing,
HON 907



Spare parts kit for
HON 907 with filter
paper in standard
model

Nominal size	No. / Letter	Qty	Name	Part no.
DN 25			Spare parts kit for filter paper with particle size of 10µm	K907-001
	27	1	Gasket	18740-RMK
	30	1	O-ring	20513-RMK
	32	1	O-ring	21269
		1	O-ring*	20336
		1	Filter insert	15013100

Nominal size	No. / Letter	Qty	Name	Part no.
DN 50			Spare parts kit for filter paper with particle size of 10µm	K907-002
	27	1	Gasket	18789
	30	1	O-ring	20509
	32	1	O-ring	21271
		1	O-ring*	20265-RMK
		1	Filter insert	15014100

Nominal size	No. / Letter	Qty	Name	Part no.
DN 80			Spare parts kit for filter paper with particle size of 10µm	K907-003
	27	1	Gasket	18789
	30	1	O-ring	20443-RMK
	32	1	O-ring	21262-RMK
		1	O-ring*	20479
		1	Filter insert	15015100-RMK

Nominal size	No. / Letter	Qty	Name	Part no.
DN 100			Spare parts kit for filter paper with particle size of 10µm	K907-004
	27	1	Gasket	18789
	30	1	O-ring	20514-RMK
	32	1	O-ring	21272-RMK
		1	O-ring*	20269-RMK
		1	Filter insert	15016100

*) O-ring for devices up to year of manufacture of 2006

***) The filter insert is composed of the following components together: Filter basket, filter paper and rubber rings

Maintenance parts for HON 907

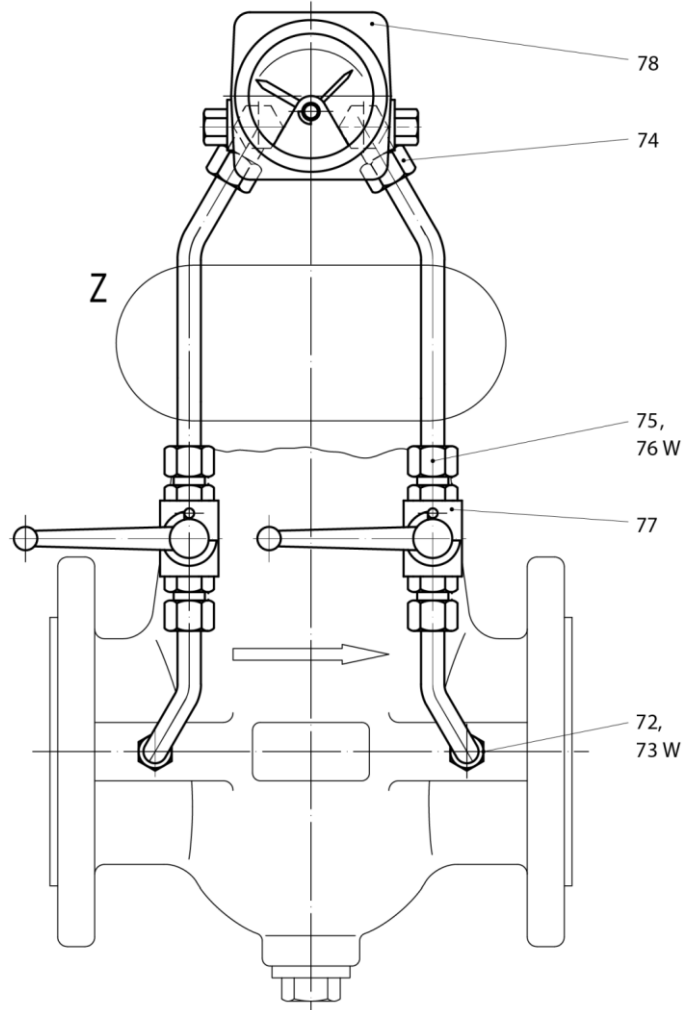
No. / Letter	Name	Qty	Part no.				
			DN 25	DN 50	DN 80	DN 100	DN 150
24	Filter paper 1, Standard (>10 µm)	1	15013103	15014103	15015103	15016103	
24	Filter paper 2, Polyester reinf. (> 4 µm)	1	15013173	15014173	15015173	15016173	
24	Filter paper 3, fine-pored (> 2 µm)	1	15013183	15014183	15015183	15016183	
24	Rubber ring	2	15013103	15014103	15015103	15016103	
27	Gasket	1	18740-RMK	18789	18789	18789	
28	Rubber ring (glued on item 11)	1	15013105	15014105	15015105	15016105	
30	O-ring	1	20513-RMK	20509	20443-RMK	20514-RMK	
*32	O-ring as of ser. no. 73531	1	21269				
*32	O-ring as of ser. no. 60342	1		21271			
*32	O-ring as of ser. no. 65506	1			21262-RMK		
*32	O-ring as of ser. no. 75191	1				21272-RMK	
	Filter insert 1, finished part (>10 µm)		15013100	15014100	15015100- RMK	15016100	
	Filter insert 2, finished part (>4 µm)		15013170	15014170	15015170	15016170	
	Filter insert 3, finished part (>2 µm)		15013180	15014180	15015180	15016180	

*) When ordering spare parts, please consult with HON and specify the serial number!

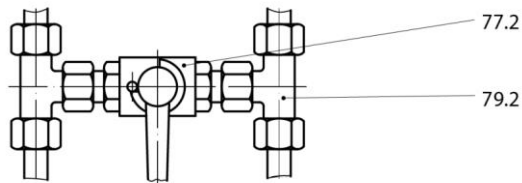
6.5 Differential pressure measuring system: Spare parts list

Spare part drawing,
differential pressure
measuring system

Cellular gas filter, differential pressure measuring system



Z
Ball valves in connection line and pressure compensation line



Maintenance parts for differential pressure measuring system

No. / Letter	Name	Qty	Part no.			
			DN 25	DN 50	DN 80	DN 100
73	Gasket	2	18704		18789	
76	Progressive ring	4	30901		30904	

6.6 Maintenance and service parts for cellular gas filter - HON 906

Maintenance and service parts, HON 906

Part no.									
No.	Name	Qty.	M	Material	DN 25	DN 50	DN 80	DN 100	DN 150
1	Cover, machined part	1		GLM	10010757	10010817	10010847	10010877	
1	Cover, machined part	1		GGG					10010907
2	Socket cap screw	6		St		10098			
2	Socket cap screw	8		St	10150-RM K		10379-RM K		
2	Socket cap screw	12		St				10379-RM K	10274
3	Thread insert	6		St	26526	26526	26526		
3	Thread insert	8		St				26526	
4	Filter paper 1, Standard (>10 µm)	1	M	P	15013100	15014100	15015100- RMK	15016100	15017100
4	Filter paper 2, Polyester reinf. (> 4 µm)	1	M	P	15013173	15014173	15015173	15016173	15017173
4	Filter paper 3, fine-pored (> 2 µm)	1	M	P	15013180	15014180	15015180	15016180	15017180
4	Rubber ring	2	M	KG	15013104	15014104	15015104	15016104	15017104
5	Body, machined part	1		GLM	10010761	10010821	10010851	10010881	
5	Body, machined part	1		GGG					10010911
6	Screw plug	1		St	25578	25578	26082	26082	26082
7	Gasket	1	M	LM	18684-RM K	18684-RM K	18683-RM K	18683-RM K	18683-RM K
8	Rubber ring (glued on item 11)	1	M	KG	15013105	15014105	15015105	15016105	15017105
9	Filter basket, outer part	1		St	15013120	15014120	15015120	15016120	15017120
10	O-ring	1	M	KG	20513-RM K	20509	20443-RM K	20514-RM K	20545
11	Filter basket, inner part	1		St	15013110	15014110	15015110	15016110	15017110
*12	O-ring as of ser. no. 80595	1	M	KG	21269				
*12	O-ring as of ser. no. 58937	1	M	KG		21271			
*12	O-ring as of ser. no. 61060	1	M	KG			21262-RM K		
*12	O-ring as of ser. no. 60547	1	M	KG				21272-RM K	
12	O-ring	1	M	KG					20539-RM K
13	Screw plug	4		St	26144	10381	10381	10381	10381

					Part no.				
No.	Name	Qty.	M	Material	DN 25	DN 50	DN 80	DN 100	DN 150
14	Gasket	4	M	LM	18740-RM K	18789	18789	18789	18789
15	Eye bolt	1		St					10021
Pre-assembled parts, no item number:					15013101	15014101	15015101	15016101	15017101
Filter basket, pre-assembled (consisting of items 9 and 11)									
Filter insert, finished part (consisting of items 4, 8, 9, 11), optionally:									
	Filter insert 1, finished part (>10 µm)	1	M		15013100	15014100	15015100- RMK	15016100	15017100
	Filter insert 2, finished part (>4 µm)	1	M		15013170	15014170	15015170	15016170	15017170
	Filter insert 3, finished part (>2 µm)	1	M		15013180	15014180	15015180	15016180	15017180

*) When ordering spare parts, please consult with HON and specify the serial number!

M Parts to be kept at the ready for maintenance tasks.

6.7 Maintenance and service parts for the cellular gas filters - HON 906a/906a"t"

Maintenance and service parts, HON 906a / HON 906a"t"

					Part no.				
No.	Name	Qty.	M	Material	DN 25	DN 50	DN 80	DN 100	
41	Cover, machined part	1		GGG	15013003	15014003	15015003	15016003	
42	Socket cap screw	6		St	10551-RM K				
42	Socket cap screw	10		St		10551-RM K	10441		
42	Socket cap screw	16		St				10441	
44	Filter paper 1, Standard (>10 µm)	1	M	P	15013103	15014103	15015103	15016103	
44	Filter paper 2, Polyester reinf. (> 4 µm)	1	M	P	15013173	15014173	15015173	15016173	
44	Filter paper 3, fine-pored (> 2 µm)	1	M	P	15013183	15014183	15015183	15016183	
44	Rubber ring	2	M	KG	15013104	15014104	15015104	15016104	

Part no.								
No.	Name	Qty.	M	Material	DN 25	DN 50	DN 80	DN 100
45	Body, machined part, optionally:							
45	Body, machined part PN 16 and PN 25	1		GGG	15013010	15014010	15015010	15016010
45	Body, machined part Class 150	1		GGG	15013012	15014012	15015012	15016012
46	Screw plug	1		St	26122	27565	27565	27565
47	Gasket	1	M	LM	18720	18791-RM K	18791-RM K	18791-RM K
48	Rubber ring (glued on item 11)	1	M	KG	15013105	15014105	15015105	15016105
49	Filter basket, outer part	1		St	15013120	15014120	15015120	15016120
50	O-ring	1	M	KG	21270	21273-RM K	21274-RM K	21275-RM K
51	Filter basket, inner part	1		St	15013110	15014110	15015110	15016110
52	O-ring	1	M	KG	21269	21271	21262-RM K	21272-RM K
53	Screw plug	4		St	26144	10381	10381	10381
54	Gasket	4	M	LM	18704-RM K	18789	18789	18789
55	Eye bolt	1		St			10487	10487
56	Guide tube	1		St	15013005	15014005	15015005	15016005
57	Set screw	2		St	12474	12475	12475	12475
58	Magnet insert	1			15013200	15014200	15015200	15016200
59	Washer	1		brass	14167	14168	14168	14168
60	Cap nut	1		brass	13205	13206	13206	13206
Model HON 906a"t"								
42.1	Socket cap screw				510100			
42.1	Socket cap screw					510100	510101	
42.1	Socket cap screw							510101
47.1	Gasket				518007	18801	18801	18801
50.1	O-ring				520045	520076	520077	520078
54.1	Gasket				18809	18803	18803	18803

					Part no.			
No.	Name	Qty.	M	Material	DN 25	DN 50	DN 80	DN 100
61.1	Gasket				15013502	15014502	15015502	15016502
	Pre-assembled parts, no item number:							
	Filter basket, pre-assembled (consisting of items 29 and 31)				15013101	15014101	15015101	15016101
	Filter insert, finished part (consisting of items 24, 28, 29, 31), optionally:							
	Filter insert 1, finished part (>10 µm)	1	M		15013100	15014100	15015100	15016100
	Filter insert 2, finished part (>4 µm)	1	M		15013170	15014170	15015170	15016170
	Filter insert 3, finished part (>2 µm)	1	M		15013180	15014180	15015180	15016180

*) When ordering spare parts, please consult with HON and specify the serial number!

M Parts to be kept at the ready for maintenance tasks.

6.8 Maintenance and service parts for cellular gas filter - HON 907

Maintenance and service parts, HON 907

					Part no.			
No.	Name	Qty.	M	Material	DN 25	DN 50	DN 80	DN 100
21	Cover, machined part	1		GLM	10010757	10010817	10010847	10010877
22	Socket cap screw	6		St		510096		
22	Socket cap screw	8		St	510094		510096	
22	Socket cap screw	12		St				510096
23	Thread insert	6		St	26526	26526	26526	
23	Thread insert	8		St				26526
24	Filter paper 1, Standard (>10 µm)	1	M	P	15013103	15014103	15015103	15016103
24	Filter paper 2, Polyester reinf. (> 4 µm)	1	M	P	15013173	15014173	15015173	15016173
24	Filter paper 3, fine-pored (> 2 µm)	1	M	P	15013183	15014183	15015183	15016183
24	Rubber ring	2	M	KG	15013103	15014103	15015103	15016103
25	Body, machined part	1		GLM	10010769	10010829	10010859	10010889
26	Screw plug	1		St	26144	10381	10381	10381
27	Gasket	1	M	LM	18740-RM K	18789	18789	18789

Part no.								
No.	Name	Qty.	M	Material	DN 25	DN 50	DN 80	DN 100
28	Rubber ring (glued on item 11)	1	M	KG	15013105	15014105	15015105	15016105
29	Filter basket, outer part	1		St	15013120	15014120	15015120	15016120
30	O-ring	1	M	KG	20513-RM K	20509	20443-RM K	20514-RM K
31	Filter basket, inner part	1		St	15013110	15014110	15015110	15016110
*32	O-ring as of ser. no. 80595	1	M	KG	21269			
*32	O-ring as of ser. no. 58937	1	M	KG		21271		
*32	O-ring as of ser. no. 61060	1	M	KG			21262-RM K	
*32	O-ring as of ser. no. 60547	1	M	KG				21272-RM K
Pre-assembled parts, no item number:					15013101	15014101	15015101	15016101
Filter basket, pre-assembled (consisting of items 29 and 31)								
Filter insert, finished part (consisting of items 24, 28, 29, 31), optionally:								
	Filter insert 1, finished part (>10 µm)	1	M		15013100	15014100	15015100	15016100
	Filter insert 2, finished part (>4 µm)	1	M		15013170	15014170	15015170	15016170
	Filter insert 3, finished part (>2 µm)	1	M		15013180	15014180	15015180	15016180

*) When ordering spare parts, please consult with HON and specify the serial number!

M Parts to be kept at the ready for maintenance tasks.

6.9 Maintenance and service parts - differential pressure measuring system

Maintenance and service parts, differential pressure measuring system

Part no.								
No.	Name	Qty.	M	Material	DN 25	DN 50 to DN 150		
72	Fitting	2		St	30025	30026		
73	Gasket	2	M	LM	18704	18789		
74	Fitting			St	31253	31254		
75	Sleeve nut			St	30801	30804		
76	Progressive ring	4	M	St	30901	30904		

						Part no.	
No.	Name	Qty.	M	Material	DN 25	DN 50 to DN 150	
77	Block ball valve			St	26456	26458	
78	Pressure gauge, optionally:						
	Pressure gauge for flow direction left-right	1		LM	28006	28010	
	Pressure gauge for flow direction right-left	1		LM	28008	28012	
	Pressure gauge with reed contact for flow direction left-right	1		LM	28007	28011	
	Pressure gauge with reed contact for flow direction right-left	1		LM	28009	28013	
Ball valves in connection lines and pressure compensation line							
77.2	Block ball valve	1		St	26456	26458	
79.2	Fitting	2		St	530034	530035	

*) When ordering spare parts, please consult with HON and specify the serial number!

M Parts to be kept at the ready for maintenance tasks.

6.10 Lubricants and threadlockers

Lubricants

Important! All parts must be slightly greased.

Use the following lubricants:

Application	Lubricant	Part no.
▪ All O-rings	Silicone grease	27 081
▪ All fastening screws ▪ All screw plugs	Assembly paste	27 091

Threadlocker

Important! All parts must be coated slightly.

Use the following threadlockers:

Application	Threadlocker	Part no.
▪ Closing cap threads ▪ Hex nut threads	LOCTITE	26 688

Subject to change without notice



Scan these QR Codes to see how Honeywell's integrated gas solutions can help you to better manage your gas assets and optimize your value chain.

Additional information

To learn more about Honeywell's product contact your Honeywell Process Solutions representative, or visit www.honeywellprocess.com or www.hongastec.de.

Honeywell Process Solutions

1250 West Sam Houston Parkway
South
Houston, TX 77042
Phone: 1-602-293-1866 Option 4

Honeywell Gas Technologies GmbH
Osterholzstrasse 45
23123 Kassel, Germany
Phone: +49 (0) 561 5007000

Emaar Business Park, Building 2,
Sheikh Zayed Road, PO Box 232362
Dubai, United Arab Emirates
Phone: +97144505800

Honeywell Engineering Sdn Bhd
1st Floor, Block B, No.10
Jalan Bersaru 13/4
46200, Petaling Jaya Selangor DE,
Malaysia
Phone: +603 7626 57000

A1 Building, C&W Industry Zone
No.14, Jiuxiangqiao Rd., Chaoyang
District, Beijing, P.R. China 100015
Phone: +8610-56696001

www.honeywellprocess.com
www.hongastec.de

January 2021
© 2021 Honeywell International Inc.

Honeywell