

OPERATING AND MAINTENANCE INSTRUCTIONS/  
SPARE PARTS

EDITION 01/2017

**Serving the Gas Industry  
Worldwide**

**Honeywell**

#### 4.4 Spare Parts List HON 201

-outlet pressure gauge with protection against overpressure

item no.	description	material	HON part no.
130	outlet pressure gauge:		
-	Wh 20 mbar ... 250 mbar		00 026 780
-	Wh 150 mbar ... 500 mbar		00 027 084
-	Wh 250 mbar ... 1800 mbar		00 027 191
-	Wh 750 mbar ... 2000 mbar		00 026 286
131	protection against overpressure HON 925, at option:		
-	Wh 20 mbar ... 250 mbar, internal measuring impulse connection		89 251 402
-	Wh 20 mbar ... 250 mbar, external measuring impulse connection		89 252 402
-	Wh 150 mbar ... 500 mbar, internal measuring impulse connection		89 251 403
-	Wh 150 mbar ... 500 mbar, external measuring impulse connection		89 252 403
-	Wh 250 mbar ... 1800 mbar, internal measuring impulse connection		89 251 404
-	Wh 250 mbar ... 1800 mbar, external measuring impulse connection		89 252 404
-	Wh 750 mbar ... 2000 mbar, internal measuring impulse connection		89 251 405
-	Wh 750 mbar ... 2000 mbar, external measuring impulse connection		89 252 405
132	nozzle	St	00 030 608
133	cap nut	St	00 030 804
134	compression joint	St	00 030 904
135	cap nut	St	00 030 803
136	compression joint	St	00 030 903
137	nozzle	St	00 031 201
138	nozzle	St	00 030 111

\* Parts are to be kept in stock for maintenance

**material key:**

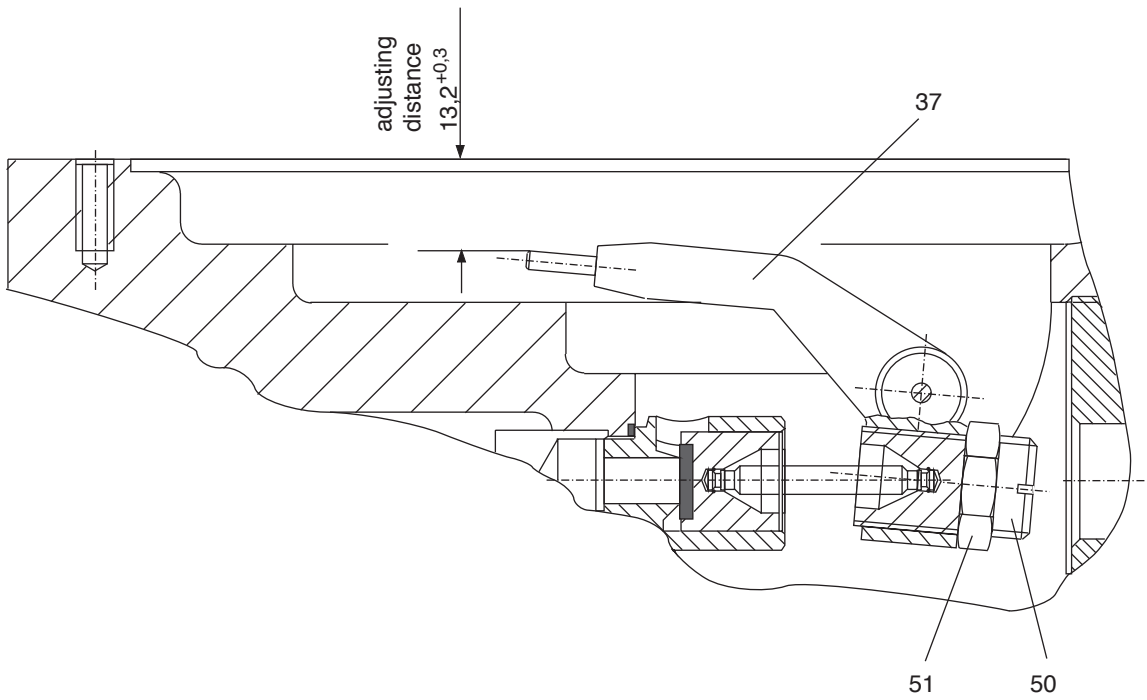
St ... steel

### 3. Special Maintenance Instructions

#### Lever (37)

As stated in the figure the lever (37) has to be fixed to  $13,2^{+0,3}$  mm in the position “closed” of the final control element of the pilot control stage. Readjustment is to be made by the adjusting screw at the piston (50).

Note: The adjustment has to be secured via the locking nut (51).



#### Connection between lever (37, 54) and lever loop (14, 27, 106, 109, 121)

- In order to connect the final control element and the actuator the lever loop (14, 27, 106, 109, 121) of the pre-mounted diaphragm units has to be pushed laterally above the cylindrical end of the lever (37, 54). It is advantageous to use an adjusting tool (e. g. a screw driver) that keeps the lever (37, 54) at a highest possible position.
- The connection between lever and lever yoke is adjusted by turning the diaphragm clockwise and counter-clockwise to the stops to find the central position.

#### Sealing washer (114)

- The bore of the sealing washer should not be oval. (The sealing washer has no absolut leakage protection function)
- The sealing washer (114) must smoothly move in transverse direction in its support ring.

#### Spring housing (31, 60)

Easy mounting of the spring housing (31, 60) in the intermediate pressure stage of the preadjusted springs is given by the additional length of two screws (25) of approximately 10 mm. These screws must be inserted in the two thread borings that are located in a special angle of 90° to the axle of the appliance.  
For dismantling the two longer screws are to be loosen at last.

### Spare Parts List HON 201

item no.	description	material	HON part no.
100	hexagon nut	St	00 013 158
101	spring washer	Ms	10 020 061
102	pressure spring	FSt	10 014 336
103	threaded pin	NSt	10 020 065
104	SBV bush	Ms	10 020 009
105*	rubber ring	KG	00 006 094
106	lever loop	Ms	10 014 902
107	cylinder screw	St	00 010 523
108	disc	St	00 014 153
109	lever loop	Ms	10 014 902
110	cylinder screw	St	00 011 003
111	intermediate base	LM	10 020 056
112*	O-ring	KG	00 021 045
113	support ring	LM	10 020 057
114*	sealing washer	FP	10 020 058
115	threaded adapter	St	10 007 642
116*	sealing ring	LM	00 018 789
117	dosing screw	Ms	10 005 097
118	nozzle	St	00 031 213
119	cap nut	St	00 030 804
120	compression joint	St	00 030 904
121	lever loop	Ms	10 020 059

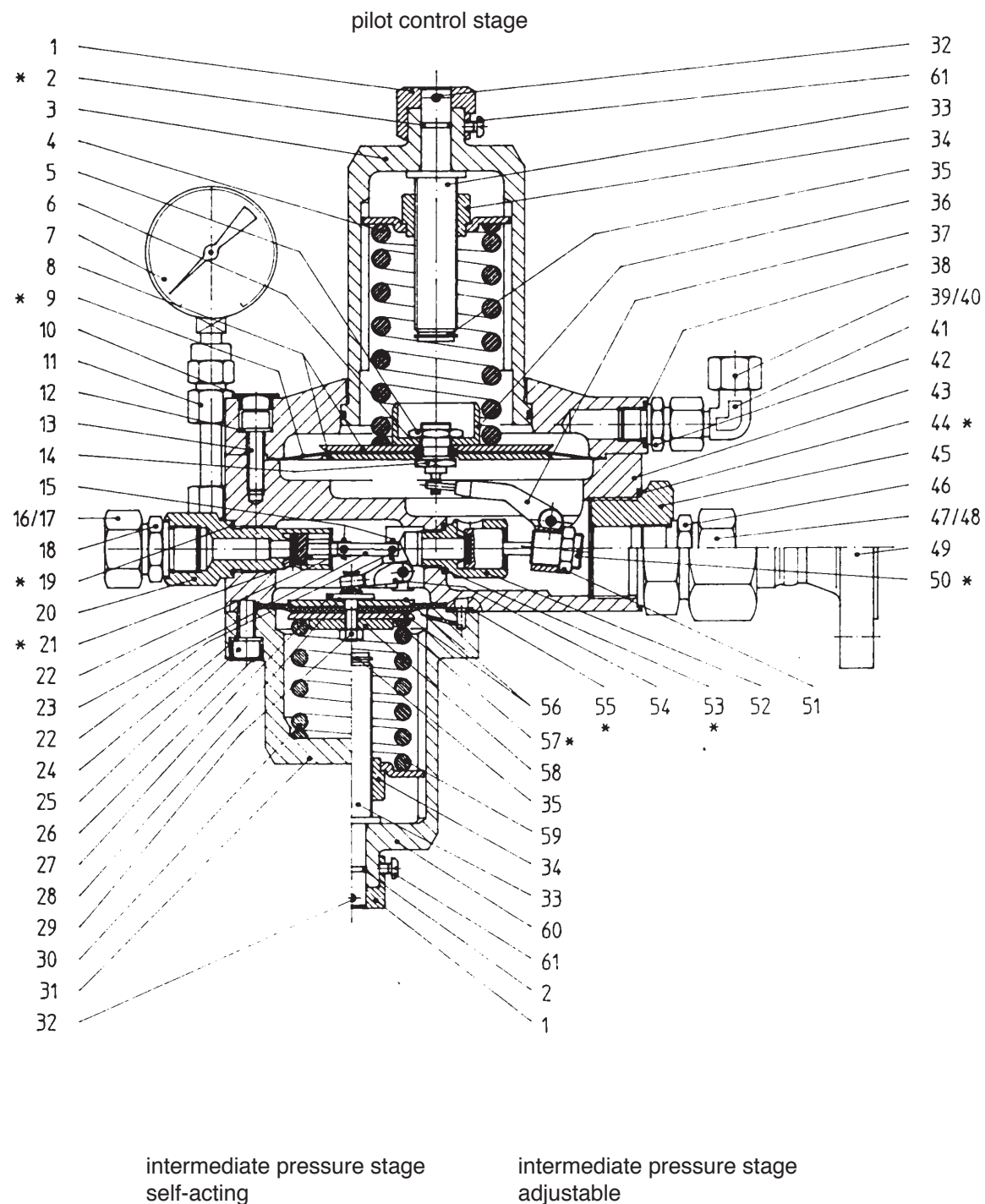
\* Parts are to be kept in stock for maintenance.

#### material key:

St	... steel	FSt	... spring steel	FP	... special plastic material
LM	... light alloy	Ms	... brass		
NSt	... stainless steel	KG	... rubbery plastic		

#### 4.1 Spare Parts Drawing HON 201

- with internal measuring impulse connection
- pilot control stage without safety relief valve for gas leakages



\* Parts are to be kept in stock for maintenance

#### Spare Parts List HON 201

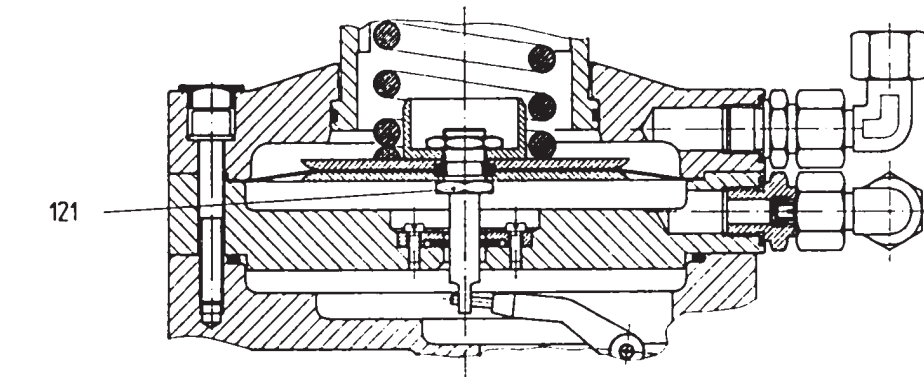
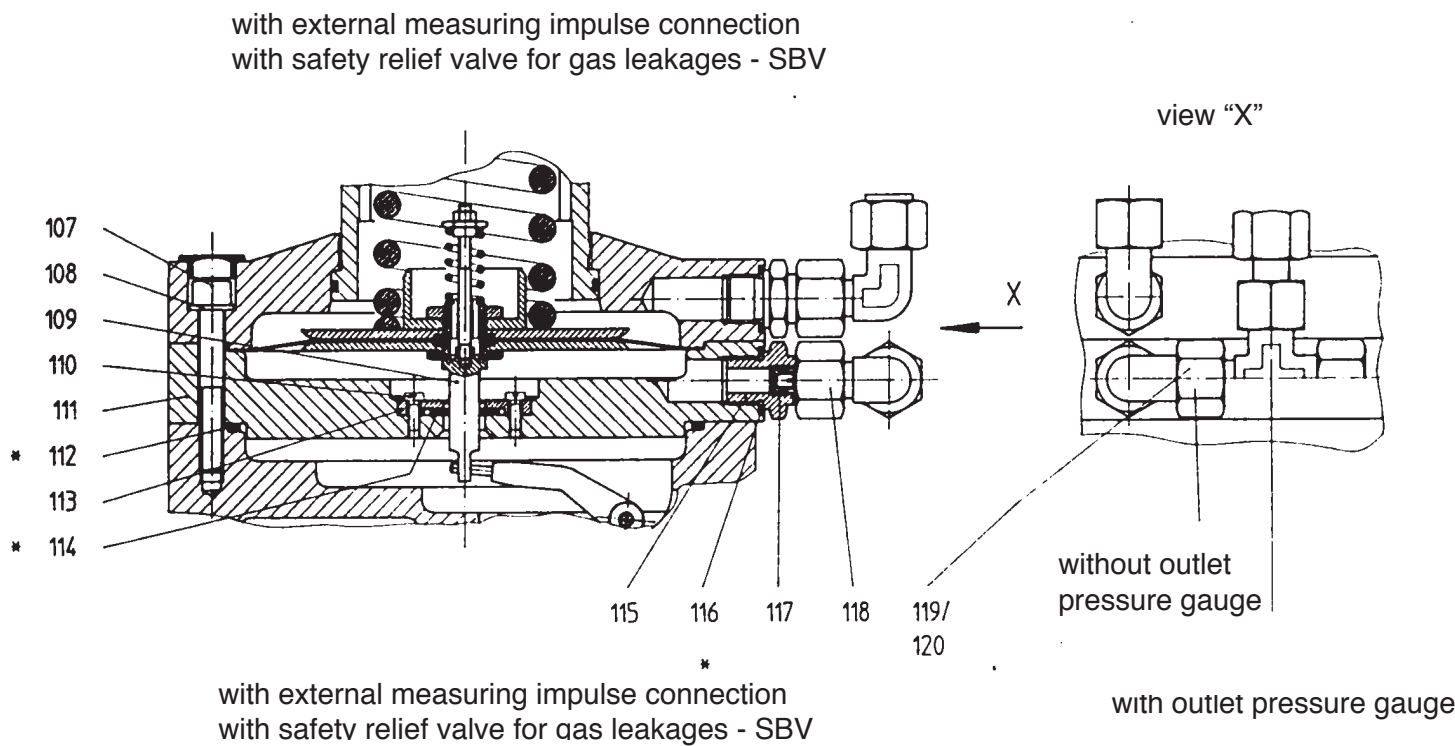
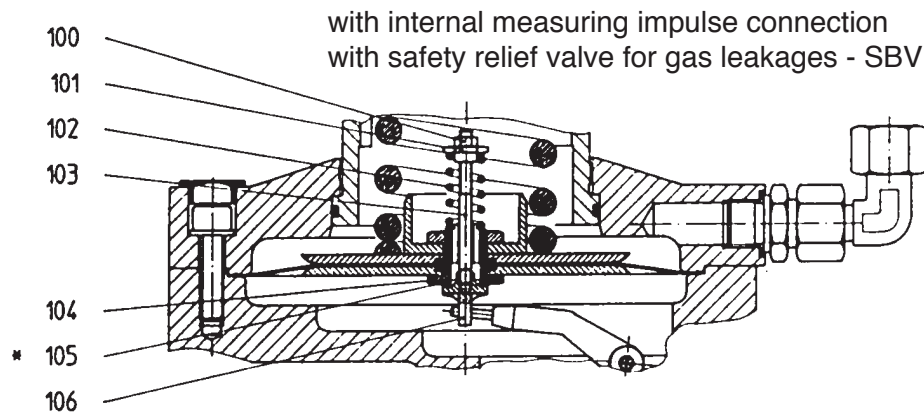
item no.	description	material	HON part no.
46	nozzle, at option:		
-	for pipe E 10	St	00 030 154
-	for pipe E 12	St	00 030 155
-	for pipe E 16	St	00 030 156
-	for pipe E 18	St	00 030 157
-	for pipe E 22	St	00 030 158
-	for pipe E 25	St	00 030 159
-	for pipe E 28	St	00 030 160
-	for pipe E 38	St	00 030 161
-	for pipe E 42	St	00 030 162
47	cap nut, at option:		
-	for pipe E 10	St	00 030 802
-	for pipe E 12	St	00 030 804
-	for pipe E 16	St	00 030 807
-	for pipe E 18	St	00 030 808
-	for pipe E 22	St	00 030 810
-	for pipe E 25	St	00 030 811
-	for pipe E 28	St	00 030 812
-	for pipe E 38	St	00 030 814
-	for pipe E 42	St	00 030 815
48	compression joint, at option:		
-	for pipe E 10	St	00 030 903
-	for pipe E 12	St	00 030 904
-	for pipe E 16	St	00 030 906
-	for pipe E 18	St	00 030 907
-	for pipe E 22	St	00 030 009
-	for pipe E 25	St	00 030 910
-	for pipe E 28	St	00 030 911
-	for pipe E 38	St	00 030 913
-	for pipe E 42	St	00 030 914
49	outlet flange, at option:		
-	DN 25 PN 25 and PN 40	St	10 009 536
-	DN 25 ANSI 300 RF	St	10 009 445
-	DN 25 ANSI 300 RJ	St	10 009 442
-	DN 25 ANSI 600 RF	St	10 009 537
-	DN 25 ANSI 600 RJ	St	10 009 538
-	DN 40 PN 25 and PN 40	St	10 009 539
-	DN 40 ANSI 300 RF	St	10 009 447
-	DN 40 ANSI 300 RJ	St	10 009 448
-	DN 40 ANSI 600 RF	St	10 009 540
-	DN 40 ANSI 600 RJ	St	10 009 541

\* Parts are to be kept in stock for maintenance.

**material key:**

St ... steel

## Spare Parts Drawing HON 201



\* Parts are to be kept in stock for maintenance.

## 4.2 Spare Parts List HON 201

item no.	description	material	HON part no.
1	hexagon adjusting screw	NSt	10 014 954
2*	O-ring	KG	00 020 331
3	spring housing (pilot control stage), complete	LM/KG	10 020 007
4	pressure spring, at option		
-	F2 Ø 3.2 for Wh 0.02 ... 0.04 bar	FSt	10 014 958
-	F3 Ø 4.0 for Wh 0.03 ... 0.1 bar	FSt	10 014 959
-	F4 Ø 4.5 for Wh 0.075 ... 0.25 bar	FSt	10 014 960
-	F5 Ø 5.6 for Wh 0.15 ... 0.5 bar	FSt	10 014 961
-	F6 Ø 6.5 for Wh 0.25 ... 1 bar	FSt	10 014 962
-	F7 Ø 8.0 for Wh 0.5 ... 1.8 bar	FSt	10 014 963
-	F8 Ø 9.0 for Wh 0.75 ... 2 bar	FSt	10 014 964
5	hexagon nut	St	10 014 694
6*	stem seal	KG	10 000 066
7	pressure gauge	Ms	00 026 282
8	diaphragm plate	St	10 020 010
9*	diaphragm	KG	10 020 011
10	plug	K	00 026 348
11	union piece	St	00 031 803
12	disc	St	00 014 153
13	cylinder screw	St	00 010 351
14	lever loop	Ms	10 020 054
15	split pin	St	00 005 164
16	cap nut, at option:		
-	for pipe E 10	St	00 030 802
-	for pipe E 12	St	00 030 804
-	for pipe E 16	St	00 030 807
-	for pipe E 18	St	00 030 808
17	compression joint, at option:		
-	for pipe E 10	St	00 030 903
-	for pipe E 12	St	00 030 904
-	for pipe E 16	St	00 030 906
-	for pipe E 18	St	00 030 907
18	nozzle, at option:		
-	for pipe E 10	St	00 030 154
-	for pipe E 12	St	00 030 155
-	for pipe E 16	St	00 030 156
-	for pipe E 18	St	00 030 157
19	O-ring	KG	00 020 232

\* Parts are to be kept in stock for maintenance.

### material key:

St	... steel	FSt	... spring steel
LM	... light alloy	Ms	... brass
K	... plastic material	KG	... rubbery plastic

## Spare Parts List HON 201

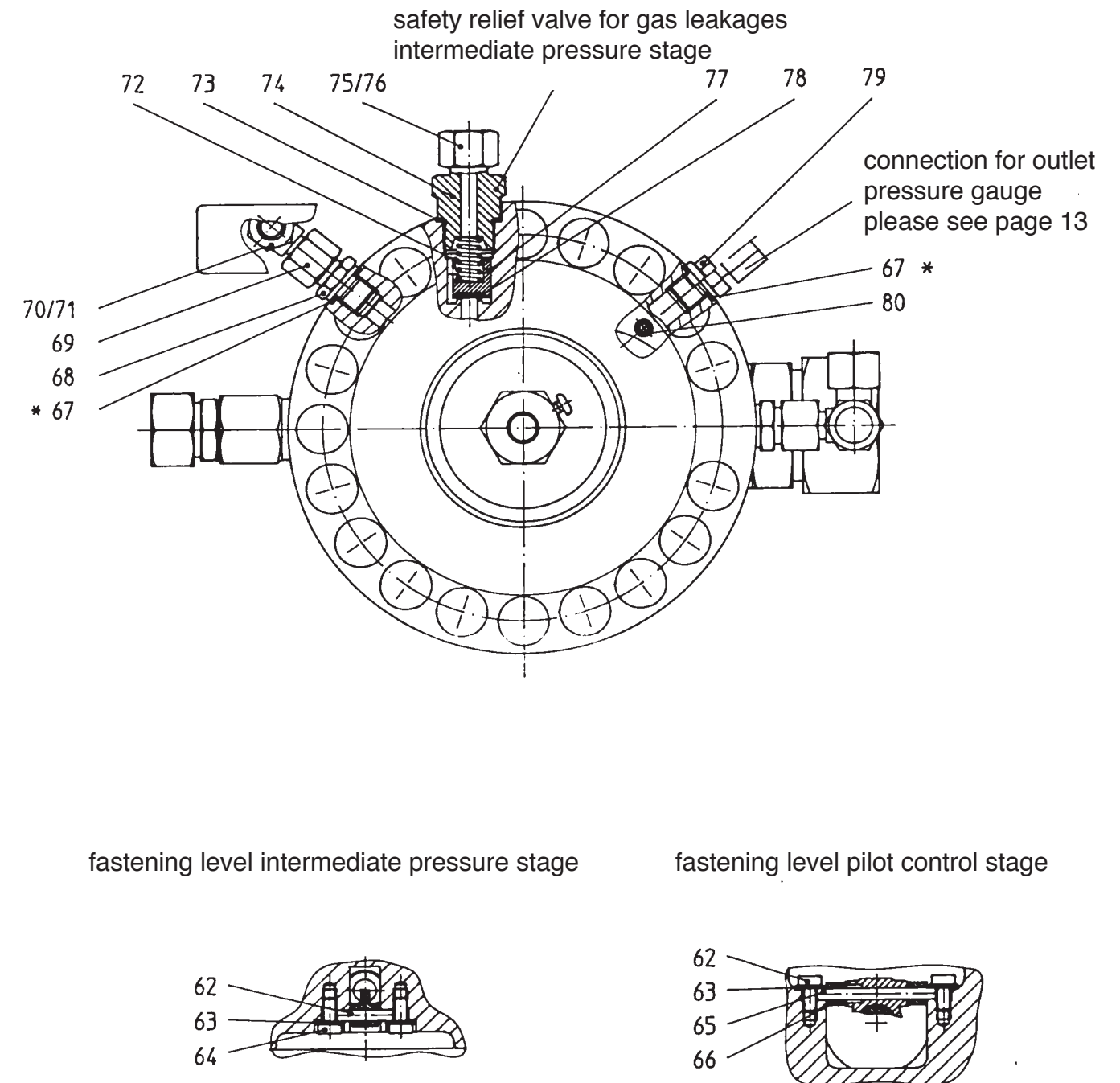
item no.	description	material	HON part no.
20	orifice (intermediate stage), at option:		
-	for pipe E 10 and E 12: orifice Ø 2.0	Ms	10 020 015
-	orifice Ø 3.7	Ms	10 020 017
-	orifice Ø 5.5	Ms	10 020 019
-	orifice Ø 8.0	Ms	10 020 021
-	for pipe E 16 and E 18: orifice Ø 2.0	Ms	10 020 016
-	orifice Ø 3.7	Ms	10 020 018
-	orifice Ø 5.5	Ms	10 020 020
-	orifice Ø 8.0	Ms	10 020 022
21	piston	Ms/KG	10 020 028
22	bolt	NSt	10 014 451
23	rod	Ms	00 014 428
24	disc	St	00 014 153
25	cylinder screw	St	00 010 351
26	plug	K	00 027 080
27	lever loop	NSt	10 014 993
28*	sealing ring	KG	00 008 068
29	safety nut	St	00 013 132
30	pressure spring, at option:		
-	pz = pa + 4 bar	FSt	10 020 076
-	pz = pa + 6 bar	FSt	10 020 077
31	spring housing	LM	10 020 006
32	dowel pin	St	00 006 646
33	adjusting screw with washer	NSt	10 020 067
34	spring plate	St/Ms	10 020 070
35	locking ring	St	00 019 022
36	lower spring plate	LM	10 014 942
37	lever	GZn	10 015 014
38*	sealing ring	LM	00 018 789
39	cap nut	St	00 030 804
40	compression joint	St	00 030 904
41	nozzle	St	00 031 213
42	nozzle	St	00 030 113
43	body	LM	10 020 002
44*	O-ring	KG	00 020 375
45	reduction piece, at option:		
-	for pipe E 10 and E 12 (M 48 x 2/M 16 x 1.5)	St	10 005 521
-	for pipe E 16 and E 18 (M 48 x 2/M 22 x 1.5)	St	10 005 522
-	for pipe E 22 (M 48 x 2/M 26 x 1.5)	St	10 005 523
-	for pipe E 25 and E 28 (M 48 x 2/M 33 x 2)	St	10 005 524

\* Parts are to be kept in stock for maintenance.

### material key:

St	... steel	FSt	... spring steel	K	... plastic material
LM	... light metal	Ms	... brass	GZn	... zinc cast
NSt	... stainless steel	KG	... rubbery plastic		

## Spare Parts Drawing HON 201



\* Parts are to be kept in stock for maintenance

## Spare Parts List HON 201

item no.	description	material	HON part no.
-	DN 50 PN 25 and PN 40	St	10 009 542
-	DN 50 ANSI 300 RF	St	10 009 449
-	DN 50 ANSI 300 RJ	St	10 009 444
-	DN 50 ANSI 600 RF	St	10 009 543
-	DN 50 ANSI 600 RJ	St	10 009 544
<b>50*</b>	piston pre-mounted	KG/Ms/NSt	10 020 045
51	locking nut	St	10 015 027
52	orifice (pilot control stage), at option:		
-	Ø 1.5	Ms	10 020 030
-	Ø 3.5	Ms	10 020 031
-	Ø 4.8	Ms	10 020 032
-	Ø 6.0	Ms	10 020 033
-	Ø 7.0	Ms	10 020 034
-	Ø 10.0	Ms	10 020 035
<b>53*</b>	sealing ring	LM	00 018 688
54	lever	NSt	10 014 427
<b>55*</b>	O-ring	KG	00 020 225
56	diaphragm plate	St	10 014 983
<b>57*</b>	diaphragm	KG	10 014 989
58	disc	LM	10 020 051
59	pressure spring	FSt	10 020 077
60	spring housing	LM	10 020 005
61	flat head screw	St	00 005 888
62	bolt	St	10 020 042
63	disc	St	00 008 279
64	cylinder screw	St	00 010 596
65	bolt	St	10 020 043
66	distance disc	St	10 020 041
<b>67*</b>	sealing ring	LM	00 018 689
68	nozzle	St	00 030 111
69	nozzle	St	00 031 207
70	cap nut	St	00 030 803
71	compression joint	St	00 030 903
72	pressure spring	FSt	10 016 796
<b>73*</b>	sealing ring	LM	00 018 787
74	intermediate piece for SBV	St	10 020 040
75	cap nut	St	00 030 804
76	compression joint	St	00 030 904
<b>77*</b>	valve cone	Ms	10 014 078
<b>78*</b>	sealing washer	KG	10 014 082
79	locking screw (version without p <sub>a</sub> -gauge)	St	00 026 175
80	dosing screw	Ms	10 014 024

\* Parts are to be kept in stock for maintenance.

### material key:

St	... steel	FSt	... spring steel
LM	... light alloy	Ms	... brass
NSt	... stainless steel	KG	... rubbery plastic

## Torque Figures

cylinder screw	screw torque figure M <sub>A</sub> in Nm
13	30
25	30

## Lubricants

part (to be greased slightly)	lubricant	HON part no.
all O-rings, insertion plate of diaphragm (9, 57) sliding surfaces of pistons (21, 50)	silicone grease	00 027 081
thread of adjusting screw (33)	mounting paste	00 027 091
all fastening and pipe screws	high duty grease	00 027 058

### 4.3 Spare Parts List HON 201

-outlet pressure gauge with protection against overpressure

external measuring impulse connection

internal measuring impulse connection

## 1. General Remarks

Every person engaged with installation, supervision, or maintenance of the gas pressure regulator type HON 201 is requested to read the following leaflets and brochures beforehand:

- **Technical Description 201.00** - contains technical data, measurements, and describes function and design.
- **General Operating Instructions for Gas Pressure Regulators and Safety Devices** - this Honeywell brochure describes installation and operation, and includes general hints on fault finding and repair.
- **Operation and Maintenance, Spare Parts 201.20** - contains further details on installation and operation of the gas pressure regulator HON 201.

Additionally, the relevant national rules and laws have to be strictly observed.  
(In Germany please refer to the DVGW worksheets G 490, G 491 and G 495).

The frequency of periodical maintenance of the gas pressure regulator HON 201 should be determined according to the prevailing conditions and the type and composition of the gaseous medium. Therefore, no fixed maintenance intervals can be prescribed. For Germany: At the beginning we recommend to use the maintenance intervals stated in the DVGW worksheet G 495. Then individual maintenance intervals should be determined for every station.

For maintenance all parts are to be cleaned and subjected to a thorough visual inspection. A visual inspection should also occur when the course of operation or functional tests have shown lack of regulating accuracy.

Particular care should be given to the checking of sealings and diaphragms, as well as carrying and moving parts. Damaged parts should be replaced by new ones. The item numbers referred to in the maintenance instructions are identical with those of spare parts drawings and spare parts lists.

We recommend to keep all parts that are specially marked "**W**" in the spare parts lists in stock for prompt maintenance availability.

## 2. Special Operating Instructions

### Setpoint Adjustments

The setpoint value increases by turning the setpoint adjustment screws (1), (101) clockwise. After a setpoint changing the setpoint adjuster has to be secured via the following elements:

intermediate pressure stage	flat head screw (61)
pilot control stage	flat head screw (61)
safety relief valve for gas leakages in control stage	nut (100).

The changing of the setpoint is impossible for the safety relief valve of the intermediate pressure stage.



**For More Information**

To learn more about Honeywell's  
Advanced Gas Solutions, visit  
[www.honeywellprocess.com](http://www.honeywellprocess.com) or contact  
your Honeywell account manager

**GERMANY****Honeywell Process Solutions**

Honeywell Gas Technologies GmbH  
Osterholzstrasse 45  
34123 Kassel, Germany  
Tel: +49 (0)561 5007-0  
Fax: +49 (0)561 5007-107

HON 201.20  
2017-01  
© 2017 Honeywell International Inc.

**Honeywell**