

OPERATING AND MAINTENANCE INSTRUCTIONS/
SPARE PARTS

EDITION 01/2017

**Serving the Gas Industry
Worldwide**

Honeywell

1. General Remarks

Our leaflet 835.00 gives full information with technical data, different versions and dimensions of the safety relief HON 835.

Our brochure "General Operating Instructions for Gas Pressure Regulators and Safety Devices" will be useful to fit the valve into the line, put it into service and find faults that might disturb the operation.

The construction, set-up, supervision and maintenance of gas pressure regulating stations are subject to special technical rules which should be strictly observed, in particular those given by the DVGW Worksheets G 490, G 491, and G 495.

The frequency of periodical maintenance to be foreseen for the safety relief valve HON 835 should be determined according to the prevailing service conditions and the type and composition of the gaseous medium. We, therefore, abstain from imposing any fixed intervals and would rather refer you to the recommendations given by the DVGW Worksheet G 495.

For maintenance all parts are to be cleaned and subjected to a thorough visual inspection. A visual inspection should not be omitted when the course of operation or functional tests have shown lack of response accuracy.

Particular care should be given to the checking of sealings and diaphragms, as well as of all carrying and moving parts. Damaged parts should be replaced by new ones.

The item numbers referred to in the maintenance instructions are identical with those of spare parts drawings and spare parts lists.

We recommend to keep all parts that are specially marked in the spare parts lists in stock for prompt maintenance availability.

2. Special Maintenance Instructions

2.1 Torque

| item no. | torque M_A in Nm |
|----------|--------------------|
| 8 | 5 |
| 26, 57 | 8 |
| 21 | 20 |
| 66 | 12 |

2.2 Lubricants

| part (to be greased slightly) | lubricant | part no. |
|------------------------------------------------------------------------------------------------|------------------|------------|
| all O-rings, all sliding surfaces pressure spring supporting surface (3, 21, 53, 61, 67) | silicone grease | 00 027 081 |
| thread of adjusting screw (3, 28, 53, 64) | fitting paste | 00 027 091 |
| all fastening and pipe screws | high duty grease | 00 027 058 |

Spare Parts Drawing HON 835

Measuring Unit Sizes 1 and 2

| item no. | Description | material | part no. | |
|------------|------------------------------------------|----------|------------|------------|
| | | | size 1 | size 2 |
| 51 | screw plug | St | 10 004 327 | 10 004 327 |
| 52* | O-ring | KG | 00 020 305 | 00 020 305 |
| 53 | adjusting screw (Wh 5 mbar to 400 mbar) | LM | 10 004 326 | 10 004 326 |
| 54* | safety washer | St | 00 014 113 | 00 014 113 |
| 55* | diaphragm, at option: | | | |
| - | rolling diaphragm up to 16 bar | KG | 10 004 703 | - |
| - | diaphragm up to 25 bar | KG | 10 004 727 | - |
| 56 | stud or | St | 00 012 329 | 00 012 329 |
| - | cylinder screw | St | 00 010 362 | 00 010 362 |
| 57 | hexagon nut | St | 00 003 020 | 00 003 020 |
| 58 | cap nut | St | 00 030 812 | 00 030 812 |
| 59 | compression joint | St | 00 030 911 | 00 030 911 |
| 60 | adapter | St | 00 032 619 | 00 032 619 |
| 61 | diaphragm plate | LM | 10 004 323 | - |
| 62 | valve body, at option: | | | |
| - | up to 16 bar | LM | 10 004 701 | 10 004 701 |
| - | up to 25 bar | LM | 10 004 722 | 10 004 722 |
| 63 | guide piece | LM | 10 019 376 | 10 019 376 |
| 64 | adjusting screw, complete (Wh > 0,4 bar) | LM/St | 10 004 194 | 10 004 194 |
| 65 | pressure spring, at option: | | | |
| - | Wh 0,005 bar to 0,03 bar (grey) | FSt | 10 004 334 | - |
| - | Wh 0,015 bar to 0,075 bar (yellow) | FSt | 10 004 335 | - |
| - | Wh 0,04 bar to 0,15 bar (ivory) | FSt | 10 004 336 | - |
| - | Wh 0,075 bar to 0,2 bar (light red) | FSt | 10 004 337 | - |
| - | Wh 0,1 bar to 0,3 bar (dark red) | FSt | 10 004 338 | - |
| - | Wh 0,15 bar to 0,4 bar (light blue) | FSt | 10 004 339 | - |
| - | Wh 0,2 bar to 1,0 bar (dark blue) | FSt | 10 004 340 | - |
| - | Wh 0,2 bar to 0,6 bar (dark red) | FSt | - | 10 004 338 |
| - | Wh 0,3 bar to 0,8 bar (light blue) | FSt | - | 10 004 339 |
| - | Wh 0,4 bar to 2,0 bar (dark blue) | FSt | - | 10 004 340 |
| 66 | hexagon nut | St | 00 005 692 | 00 005 692 |
| 67 | diaphragm plate | LM | - | 10 004 730 |
| 68* | diaphragm: | | | |
| - | up to 16 bar | KG | - | 10 004 713 |
| - | up to 25 bar | KG | - | 10 004 728 |
| 69 | diaphragm cover, complete: | | | |
| - | up to 16 bar | St | 10 004 706 | 10 004 706 |
| - | up to 25 bar | St | 10 004 723 | 10 004 723 |

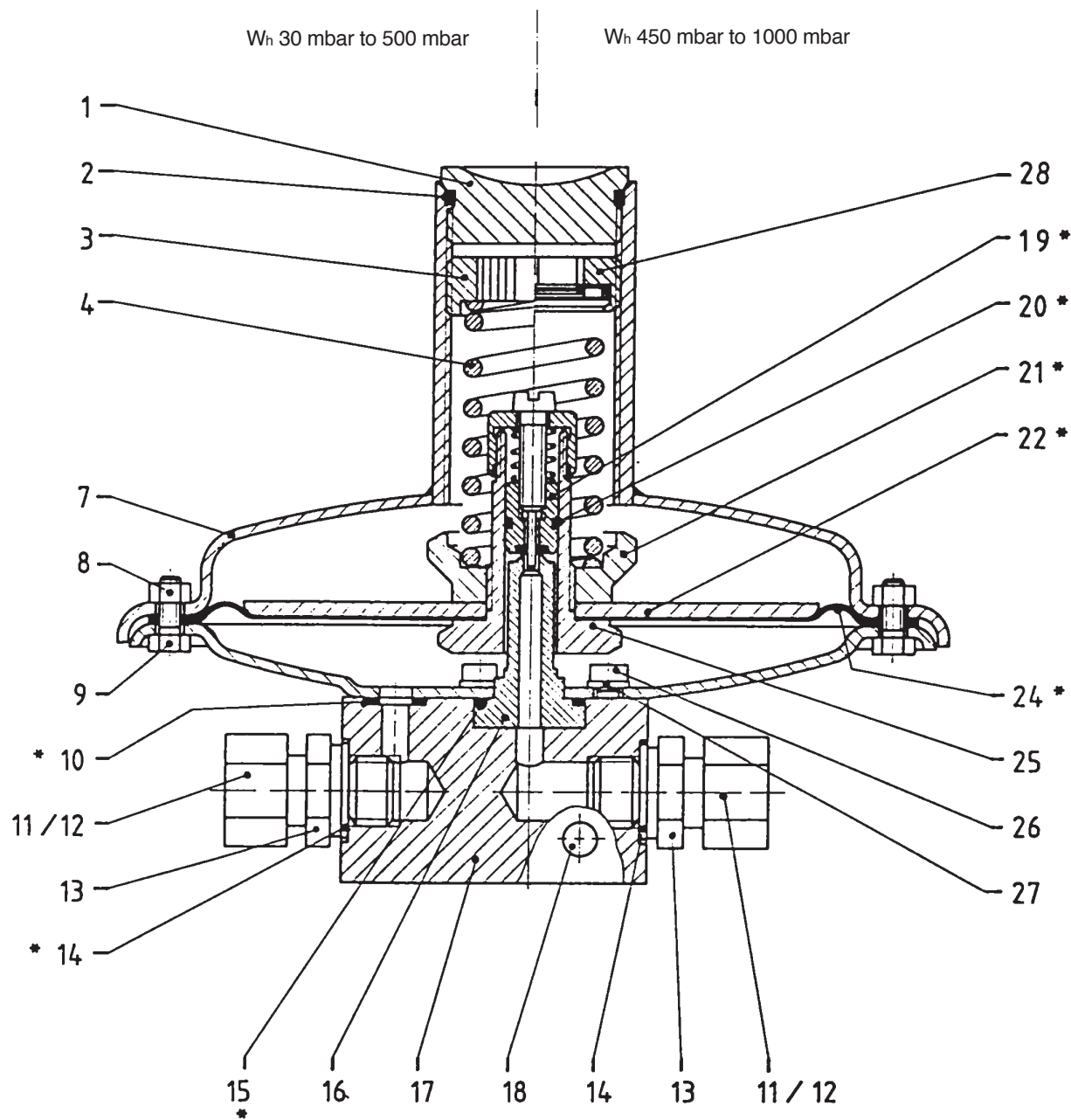
Parts marked by an asterisk (*) are to be kept in stock for easy maintenance

material key:

St ... steel
LM ... light metal
KG ... rubber-like plastic material
FSt ... spring steel

3. Spare Parts

Spare Parts Drawing HON 835 with Measuring Unit Size 0



Parts marked by an asterisk (*) are to be kept in stock for easy maintenance

Spare Parts List HON 835

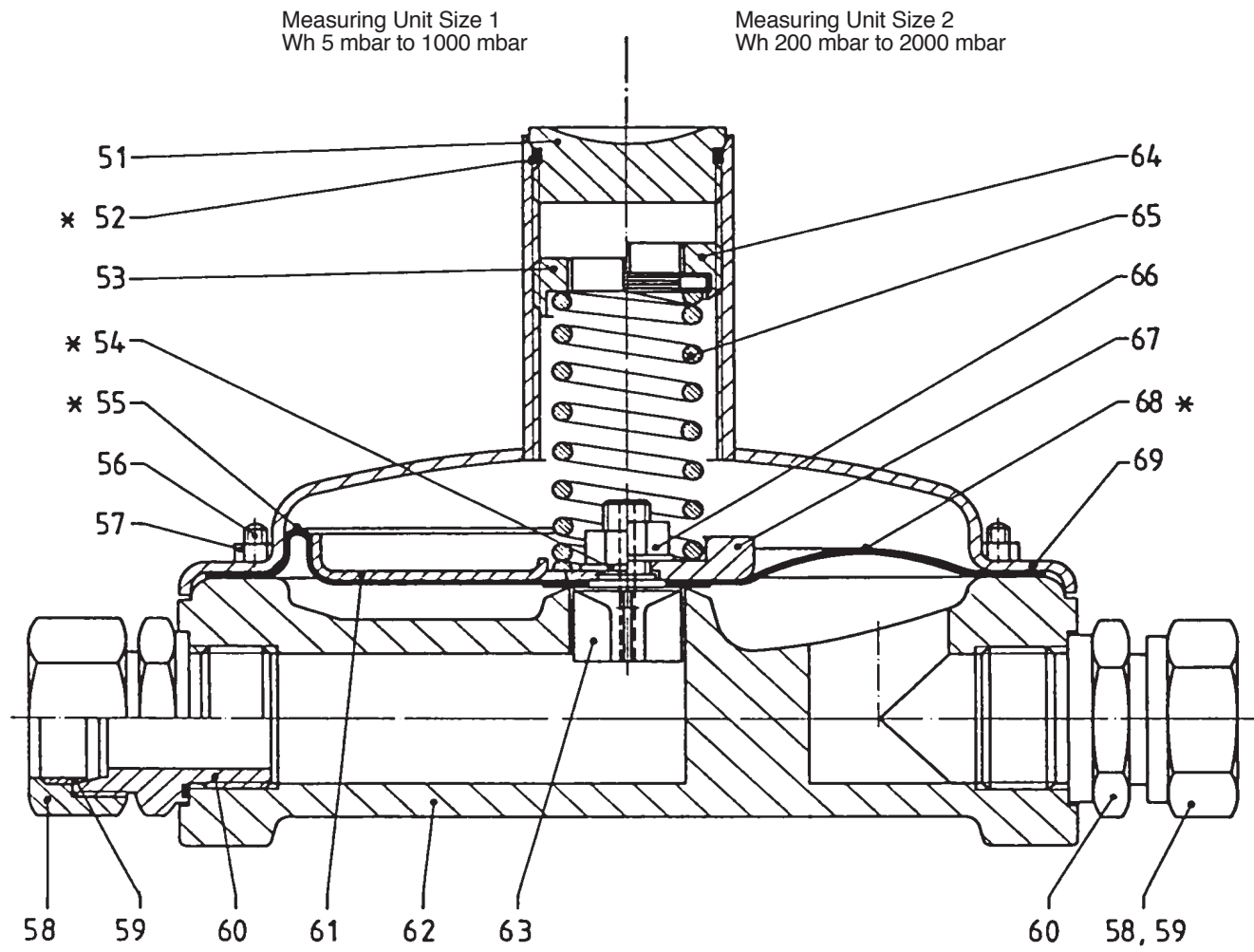
Measuring Unit Size 0

| item no. | Description | material | part no. |
|----------|--------------------------------------------------|------------------|------------|
| 1 | cap | LM | 10 004 327 |
| 2* | O-ring | KG | 00 020 305 |
| 3 | adjusting screw (Wh 0,03 bar to 0,5 bar) | LM | 10 004 326 |
| 4 | pressure spring, at option: | | |
| - | Wh 0,03 bar to 0,045 bar (grey) | FSt | 10 004 334 |
| - | Wh 0,035 bar to 0,1 bar (yellow) | FSt | 10 004 335 |
| - | Wh 0,08 bar to 0,2 bar (ivory) | FSt | 10 004 336 |
| - | Wh 0,15 bar to 0,3 bar (light red) | FSt | 10 004 337 |
| - | Wh 0,25 bar to 0,4 bar (dark red) | FSt | 10 004 338 |
| - | Wh 0,3 bar to 0,5 bar (light blue) | FSt | 10 004 339 |
| - | Wh 0,45 bar to 1,0 bar (dark blue) | FSt | 10 004 340 |
| 7 | diaphragm cover | St | 10 004 706 |
| 8 | hexagon nut | St | 00 003 020 |
| 9 | hexagon screw | St | 00 008 163 |
| 10* | O-ring | KG | 00 020 419 |
| 11 | cap nut | St | 00 030 804 |
| 12 | compression joint | St | 00 030 904 |
| 13 | adapter | St | 00 030 113 |
| 14* | sealing ring | LM | 00 018 694 |
| 15* | O-ring | KG | 00 020 383 |
| 16 | orifice | NSt | 10 011 788 |
| 17 | valve body | St | 10 011 787 |
| 18 | plug | K | 00 026 704 |
| 19* | piston, premounted | St/LM/FSt/KG/NSt | 10 020 081 |
| 20* | O-ring | KG | 00 020 341 |
| 21 | spring plate | St | 10 011 792 |
| 22 | diaphragm plate | LM | 10 011 791 |
| 24* | diaphragm | KG | 10 011 793 |
| 25 | connecting piece | Ms | 10 011 789 |
| 26 | cylinder screw | St | 00 010 318 |
| 27* | sealing ring | LM | 00 018 807 |
| 28 | adjusting screw, complete (Wh 0,45 bar to 1 bar) | LM/St | 10 004 194 |

Parts marked by an asterisk (*) are to be kept in stock for easy maintenance

material key:

| | | | | | |
|----|-----------------|-----|----------------------------------|---|----------------------|
| St | ... steel | KG | ... rubber-like plastic material | K | ... plastic material |
| LM | ... light metal | NSt | ... stainless steel | | |
| Ms | ... brass | FSt | ... spring steel | | |



2.3 Screw Locking

| | | |
|-------------------------------|---------------|------------|
| part (to be greased slightly) | screw locking | part no. |
| thread of spring plate (21) | LOCTITE | 00 026 688 |

2.4 Adjusting Tool

| | | |
|--------------------------|---------------------|------------|
| item no. | description | part no. |
| setpoint adjusting screw | adjusting key SW 22 | 10 004 254 |

Parts marked by an asterisk (*) are to be kept in stock for easy maintenance

For More Information

To learn more about Honeywell's
Advanced Gas Solutions, visit
www.honeywellprocess.com or contact
your Honeywell account manager

GERMANY**Honeywell Process Solutions**

Honeywell Gas Technologies GmbH

Osterholzstrasse 45

34123 Kassel, Germany

Tel: +49 (0)561 5007-0

Fax: +49 (0)561 5007-107

HON 835.20
2017-01
© 2017 Honeywell International Inc.

Honeywell